

TECHNISCHE DATEN:

Aufbau

Druckschraube	Polyamid PA6 GF30
Zugentlastungsschelle	Polyamid PA6 GF30
Schraube / Mutter	Edelstahl
Druckring	Polyethylen PE-HD (high density)
Dichtring	SBR/NBR
Zwischenstutzen	Polyamid PA6 GF30
Anschlussgewinde	metrisch, nach EN 60423

Eigenschaften

- sehr hohe Zugentlastung und Biegeschutz

Temperaturbereich	-30 °C / +80 °C
Schutzart	IP55

TECHNICAL DATA:

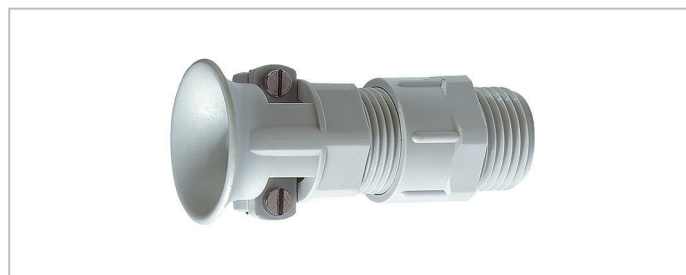
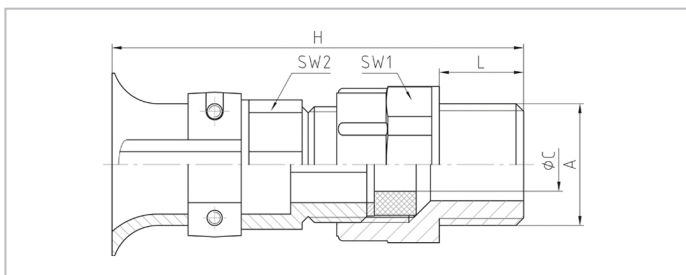
Configuration

Pressure screw	Polyamide PA6 GF30
Strain relief clamp	Polyamide PA6 GF30
Bolt / Nut	Stainless steel
Washer	Polyethylene PE-HD (high density)
Sealing ring	SBR/NBR
Gland body	Polyamide PA6 GF30
Connecting thread	metric, as per EN 60423

Properties

- increased anchorage and bending protection

Temperature range	-30 °C / +80 °C
Protection grade	IP55

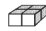


Merkmale

Characteristics

Anschlussgewinde Standardlänge

Connecting thread standard length

A	φC mm	L mm	SW1 mm	SW2 mm	H mm		Art.-Nr. / Part No.
M16x1,5	5,5 - 7,5	11	19	17	53	50	22.609M16PA
M20x1,5	9 - 11	11	24	22	57,5	50	22.613M20PA
M20x1,5	10 - 13	11	27	24	64,5	50	22.616M20PA
M25x1,5	10 - 13	11	27	24	66	50	22.616M25PA
M25x1,5	13 - 16,5	11	32	30	73	25	22.621M25PA
M32x1,5	13 - 16,5	10	36	30	65	25	22.621M32PA
M32x1,5	18 - 25	11	42	40	79	25	22.629M32PA
M40x1,5	18 - 25	11	42	40	78	25	22.629M40PA

RAL 7035
lichtgrau
light grey
Art.-Nr. / Part No.