

D-SUB 25M-IDC

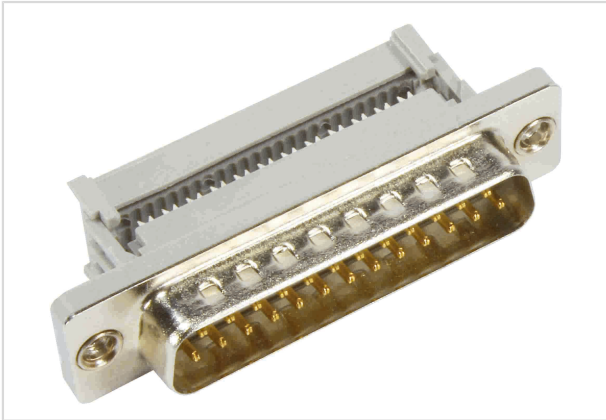


Image is for illustration purposes only. Please refer to product description.

| | |
|--------------------|---|
| Part number | 09 66 328 6700 |
| Specification | D-SUB 25M-IDC |
| HARTING eCatalogue | https://b2b.harting.com/09663286700 |

Identification

| | |
|----------------------------|---------------------|
| Category | Connectors |
| Series | D-Sub |
| Identification | Standard |
| Element | Connector |
| Description of the contact | Stamped Straight |

Version

| | |
|--------------------|---|
| Termination method | IDC insulation displacement termination |
| Gender | Male |
| Size | D-Sub 3 |
| Connection type | PCB to cable Cable to cable |
| Number of contacts | 25 |
| Locking type | Fixing flange with feed through hole \varnothing 3.1 mm |

Technical characteristics

| | |
|-------------------------|-------------------------------|
| Conductor cross-section | 0.09 ... 0.13 mm ² |
| Conductor cross-section | AWG 28 ... AWG 26 |
| Rated current | 2 A |
| Clearance distance | ≥ 0.7 mm |
| Creepage distance | ≥ 0.7 mm |
| Insulation resistance | $> 10^{10}$ Ω |
| Contact resistance | ≤ 10 m Ω |



Pushing Performance
Since 1945

Technical characteristics

| | |
|---------------------------|-----------------------------|
| Limiting temperature | -55 ... +125 °C |
| Insertion force | ≤83 N |
| Withdrawal force | ≥7.8 N ≤56 N |
| Performance level | 2 acc. to CECC 75301-802 |
| Mating cycles | ≥250 |
| Test voltage $U_{r.m.s.}$ | 1 kV |
| Hot plugging | No |

Material properties

| | |
|---|---|
| Material (insert) | Thermoplastic resin, glass-fibre filled (PBTP) Shell: Plated steel |
| Colour (insert) | Black |
| Material (contacts) | Copper alloy |
| Surface (contacts) | Noble metal over Ni |
| Material flammability class acc. to UL 94 | V-0 |
| RoHS | compliant |
| ELV status | compliant |
| China RoHS | e |
| REACH Annex XVII substances | Not contained |
| REACH ANNEX XIV substances | Not contained |
| REACH SVHC substances | Not contained |
| California Proposition 65 substances | Yes |
| California Proposition 65 substances | Lead Nickel |

Specifications and approvals

| | |
|----------------|-----------------------|
| Specifications | DIN 41652 |
| UL / CSA | UL 1977 ECBT2.E102079 |

Commercial data

| | |
|-------------------|---------|
| Packaging size | 100 |
| Net weight | 12.54 g |
| Country of origin | China |



Pushing Performance
Since 1945

Commercial data

| | |
|--------------------------------|------------------------|
| European customs tariff number | 85366990 |
| GTIN | 5713140083783 |
| eCl@ss | 27440214 D-Sub coupler |
