

TECHNISCHE DATEN:

Aufbau

Dichteinsatz TPE TPS

Eigenschaften

- für abgerundete Flachkabel

Temperaturbereich -30 °C / +100 °C

Hinweis montiert in den PERFECT Serien:
50.6xx MFK1, 50.6xx PAzzzzFK1

TECHNICAL DATA:

Configuration

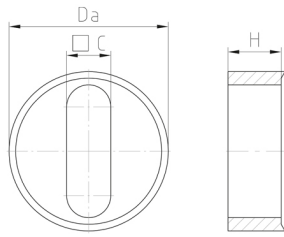
Sealing insert TPE TPS

Properties

- for chamfered flat cables


Temperature range -30 °C / +100 °C

Comment assembled in PERFECT series:
50.6xx MFK1, 50.6xx PAzzzzFK1



Merkmale

Characteristics

| Größe / Size xx | □ C mm | H mm | Da mm |  | Art.-Nr. / Part No. |
|--------------------|-----------|---------|----------|---|---------------------|
| M20 | 5x12 | 7,5 | 15,1 | 50 | WJ-DM 20FK1 |
| M25 | 6x16,3 | 9,3 | 19,8 | 50 | WJ-DM 25FK1 |
| M32 | 9x20 | 12,5 | 25,1 | 25 | WJ-DM 32FK1 |
| M40 | 10x27 | 15 | 32,3 | 10 | WJ-DM 40FK1 |
| M50 | 13x34 | 17 | 41 | 5 | WJ-DM 50FK1 |
| M63 | 15x45 | 18 | 54 | 5 | WJ-DM 63FK1 |