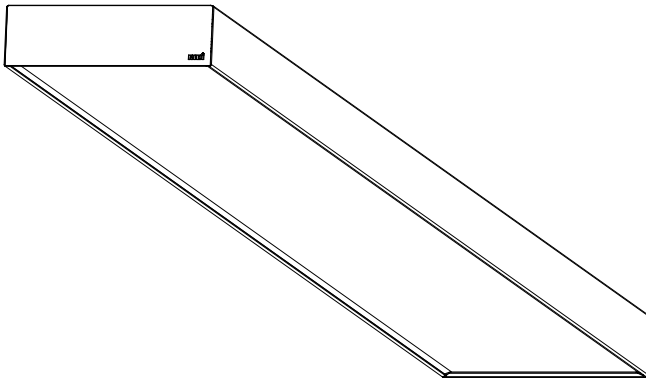


Montageanleitung

Ⓒ mounting instruction Ⓕ Notice de montage Ⓖ Instrukcja montażu
Ⓔ Instrucciones de montaje ⓘ Istruzioni di montaggio

ARKA...

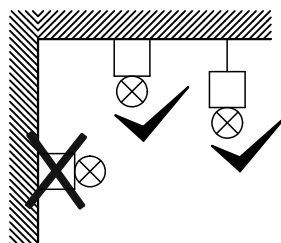
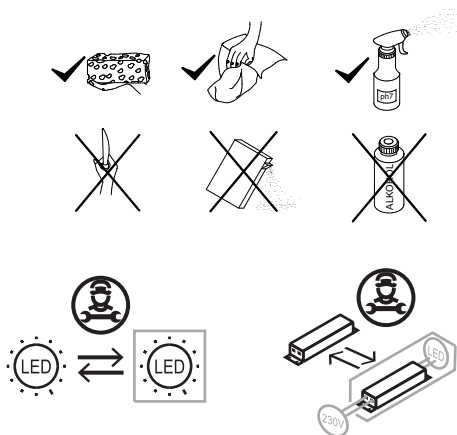


RIDI Leuchten GmbH
Hauptstrasse 31 - 33 · D-72417 Jungingen
Tel. 07477/872-0 · Fax 07477/872-48
kontakt@ridi.de · www.ridi.de

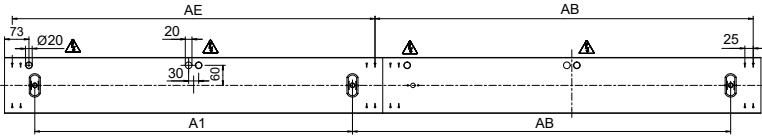
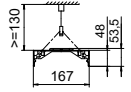
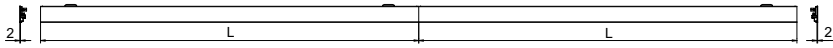
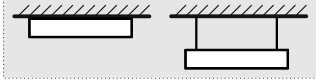


- (D) Für die Installation und für den Betrieb der Leuchten sind die nationalen Sicherheitsvorschriften zu beachten.
- (GB) Please note national safety instructions for installation and operation of this luminaire.
- (F) Pour l'installation et le fonctionnement des luminaires il est impératif de respecter les normes nationales de sécurité en vigueur.
- (PL) W celu prawidłowej instalacji i poprawnego działania oprawy należy przestrzegać krajowych przepisów bezpieczeństwa.
- (E) Para la instalación y la puesta en funcionamiento de las luminarias deben observarse las normas nacionales de seguridad.
- (I) Per l'installazione e il funzionamento delle lampade si fa riferimento alle normative di sicurezza nazionali.

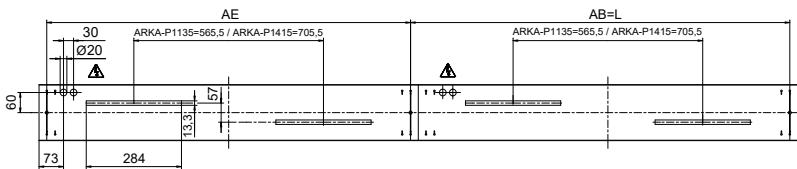
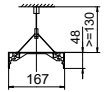
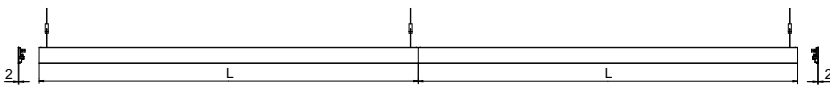
- (D) Die Lichtquelle dieser Leuchte darf nur vom Hersteller oder einem von ihm beauftragten Servicetechniker oder einer vergleichbar qualifizierten Person ersetzt werden.
- (GB) Only the manufacturer, a trained service technician or another equally qualified person is permitted to replace the light source of this luminaire.
- (F) La source lumineuse de ce luminaire ne peut être remplacée que par le fabricant, un technicien de service mandaté par celui-ci ou une personne présentant une qualification analogue.
- (PL) Wymiany źródła światła w tej oprawie oświetleniowej może dokonać wyłącznie producent bądź uprawniony pracownik serwisu albo osoba o podobnych kwalifikacjach.
- (E) La fuente de luz de esta luminaria solamente podrá ser sustituida por el fabricante o una persona designada por este, ya sea un técnico de servicio u otra persona debidamente cualificada.
- (I) La sorgente luminosa di tale lampada può essere sostituita solo dal produttore o da un tecnico di assistenza da questi designato oppure da personale dotato di qualifica equivalente.



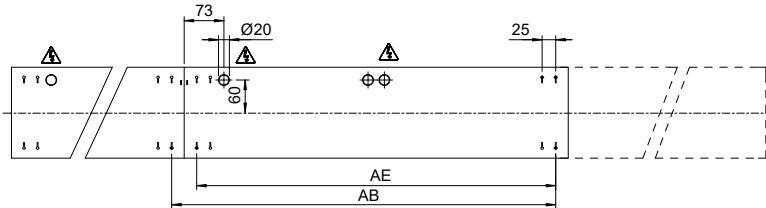
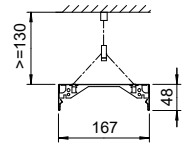
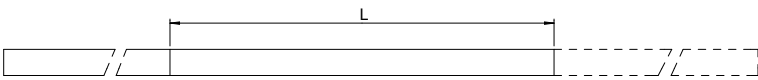
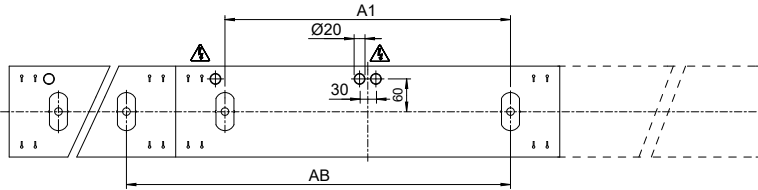
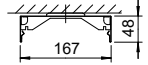
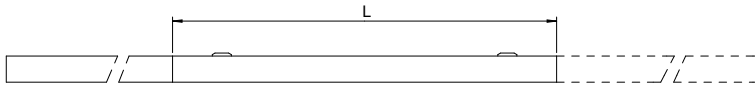
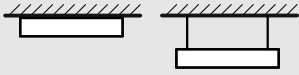
ARKA-A...




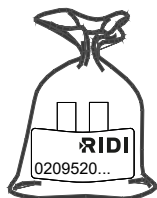
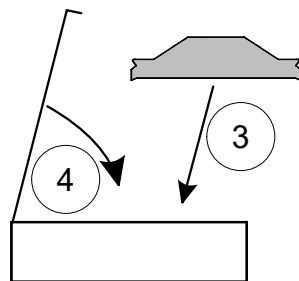
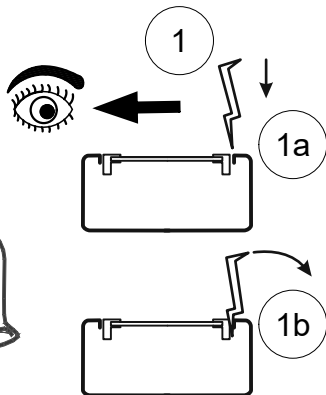
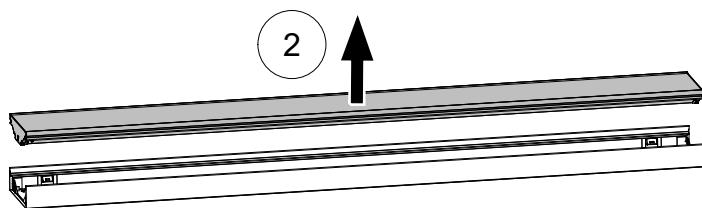
ARKA-P...



ARKA-AP-EWM...

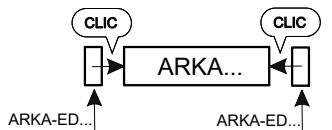


Type	L	B	H	A1	AB	AE	
ARKA-A1135...	1131	167	48	950	1131	-	220
ARKA-P1135...	1131	167	48	-	1131	1085	280
ARKA-A1415...	1411	167	48	1230	1411	-	270
ARKA-P1415...	1411	167	48	-	1411	1365	330
ARKA-AP-EWM 565,5...	565,5	167	48	384,5	565,5	519,5	95
ARKA-AP-EWM 705,5...	705,5	167	48	524,5	705,5	659,5	115
ARKA-AP-EWM 1411...	1411	167	48	1230	1411	1365	225

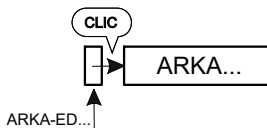


ARKA-ED...

ARKA...



ARKA... ARKA...



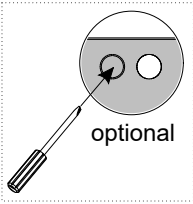
ARKA... ARKA...



ARKA... ARKA...

ARKA...

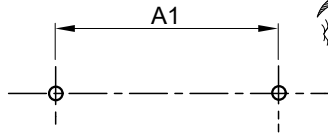
ARKA-A...



optional



1



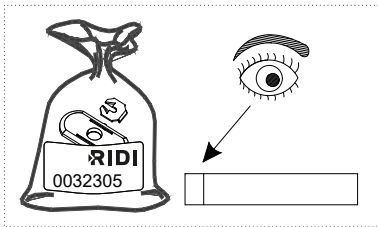
A1



4/19



bauseits
to be supplied on-site
À prévoir sur place
we własnym zakresie
por parte del cliente
a cura del cliente



2

2x



4/19

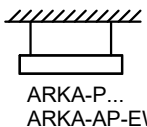
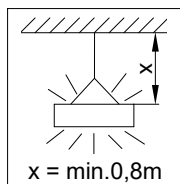
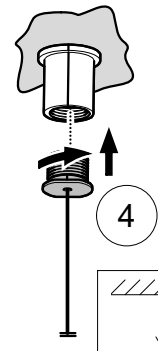
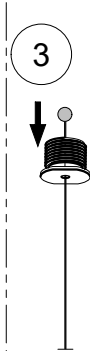
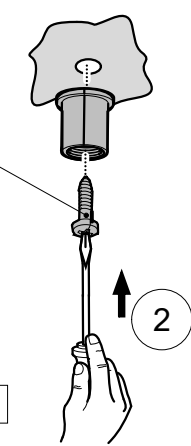
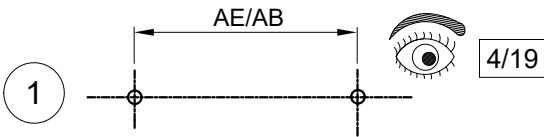
**ARKA-P...
ZSPT2Z...**



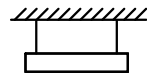
bauseits
to be supplied on-site
À prévoir sur place
we własnym zakresie
por parte del cliente
a cura del cliente



4/19



+ ZSPT2Z...
ZAL =

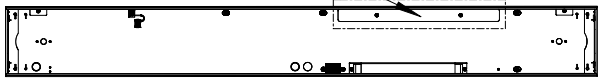
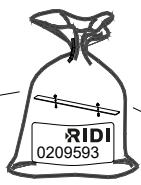
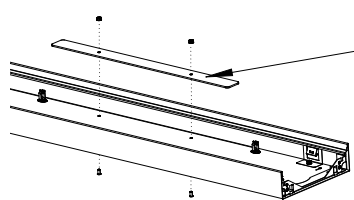


+ ZSPT2Z...
ZAL =
ZNADS-ARKA
AG ARKA-AP

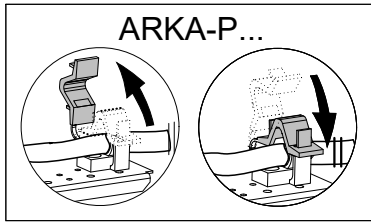
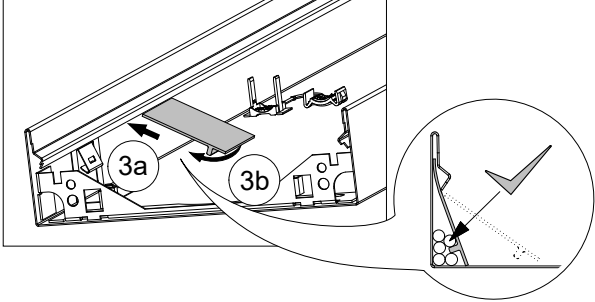
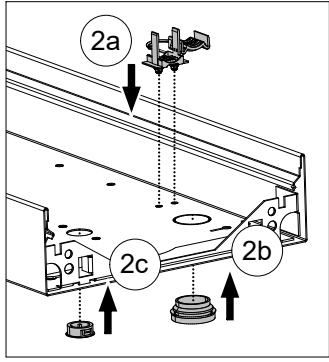
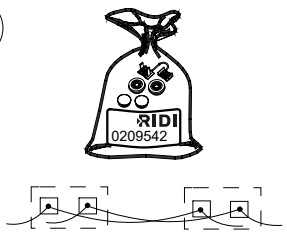
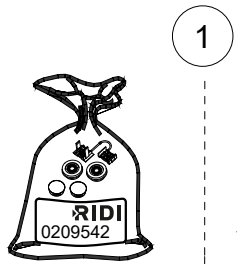
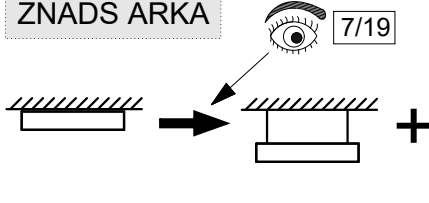


Type	ZSPT2Z	ZAL
ARKA-A...	1,5m	3m
ARKA-A...	3m	5m

AG ARKA-AP

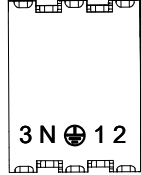


ARKA-A...
ZNADS ARKA



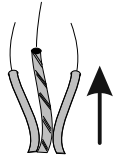
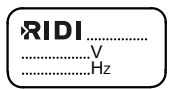
ARKA-P...

ND



	mm	A
	0,5-1,0	9
	sol. 1,5-2,5	12
0,5-2,5 mm²		

??V / ??Hz

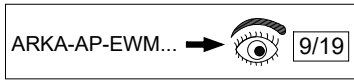
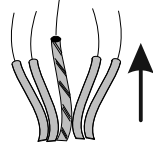


DALI

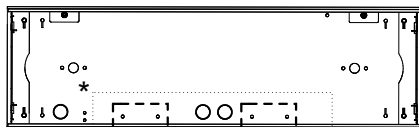


	ø	A
	0,8-1,2	9
	1,3-1,8	12
max ø1,8mm		

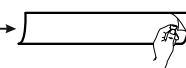
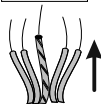
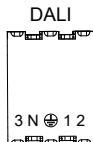
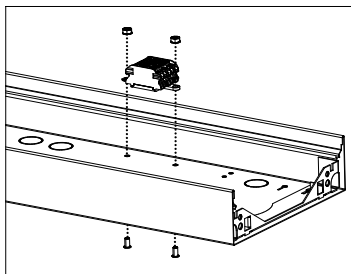
	ø	A
	0,8-1,2	9
	1,3-1,8	12
max ø1,8mm		



ARKA-AP-EWM-ZNADV

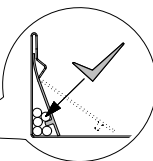
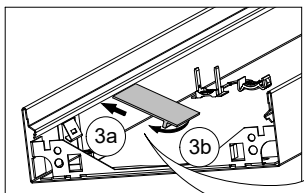
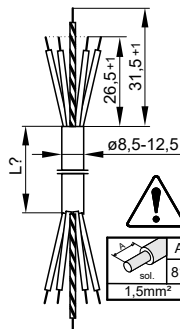


↑ ARKA-P... ARKA-A...



ZIDV-ARKA...

0209536 ZIDV-ARKA 1135/5/1,5	ARKA-AP-EWM565,5... ARKA-AP-EWM705,5... ARKA-A1135...
0209537 ZIDV-ARKA 1415/5/1,5	ARKA-AP-EWM1411... ARKA-A1415...



ZIDV-ARKA...

ARKA-P... ARKA-AP-EWM... ARKA-P...

X

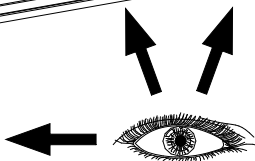
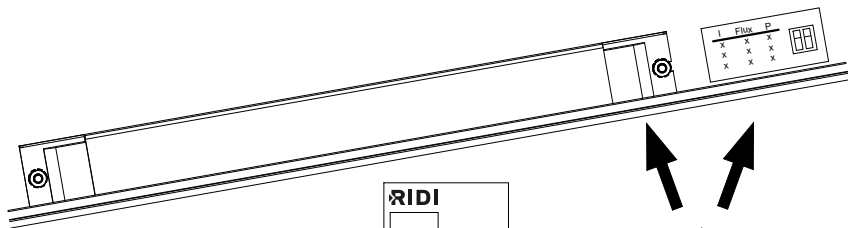
ZIDV-ARKA...

ARKA-P... ARKA-AP-EWM... ARKA-P...

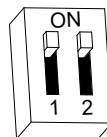
L? = !

✓

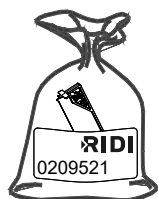
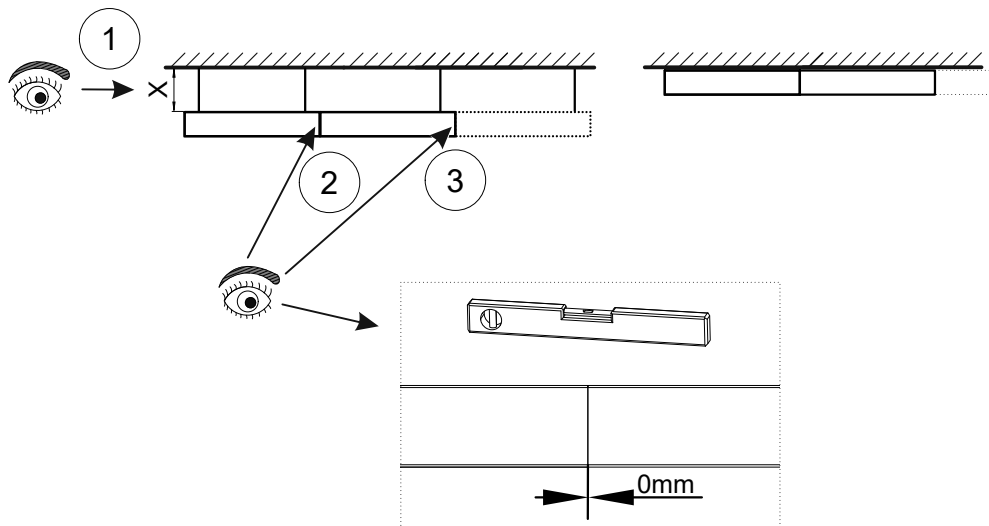
ARKA-...FL...



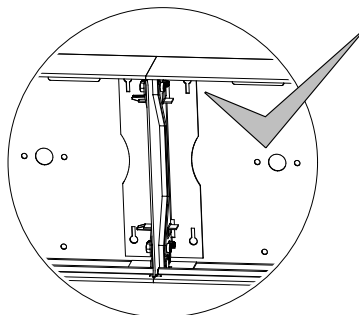
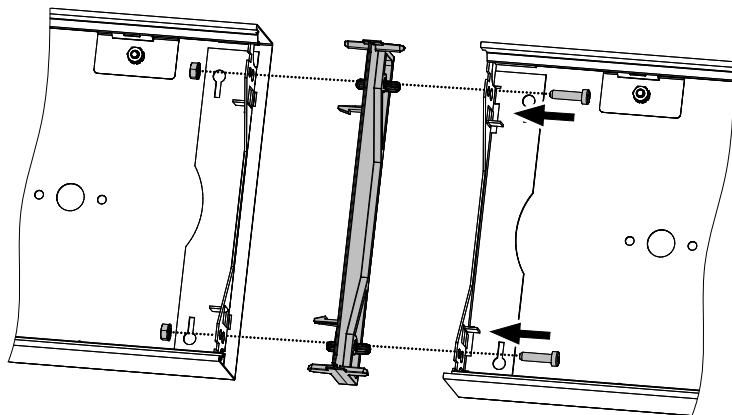
Pos	I (mA)	Flux (lm)	P (W)
0	X	X	X
1	X	X	X
2	X	X	X
3	X	X	X



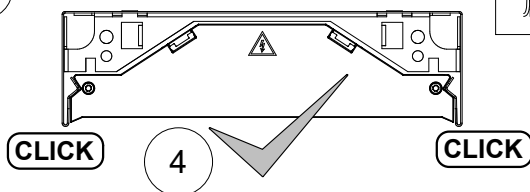
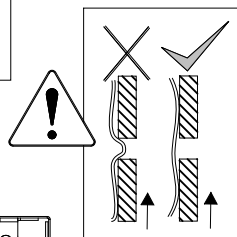
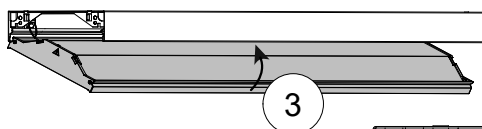
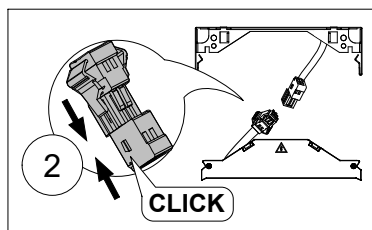
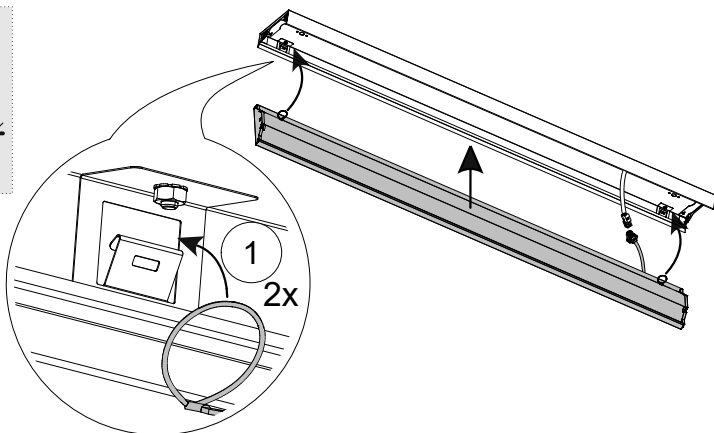
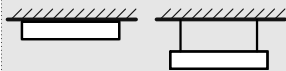
ARKA-VS



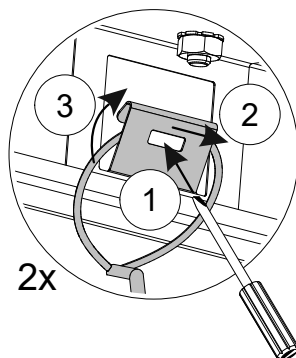
ARKA-VS



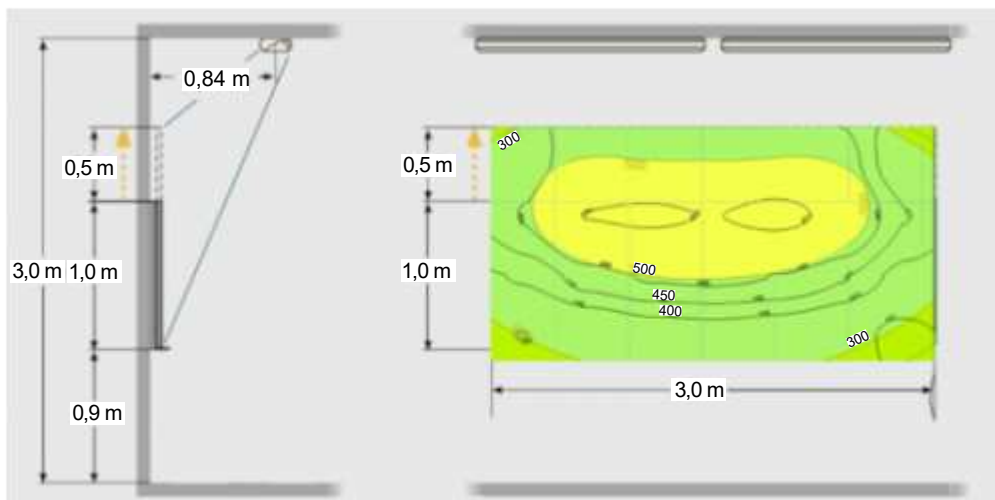
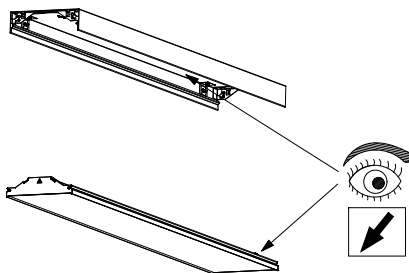
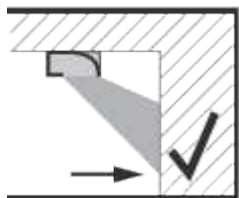
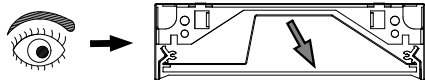
ARKA-A...
ARKA-P...
ARKA-AP-EWM...



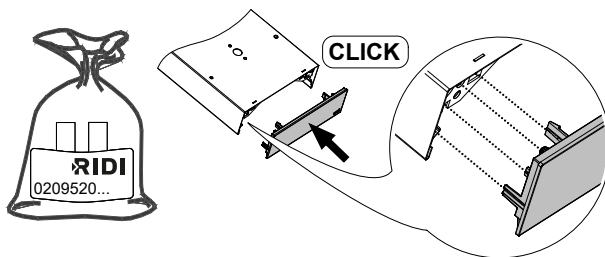
Demontage / Removal
Démontage / Demontaž
Desmontaje / Smontaggio



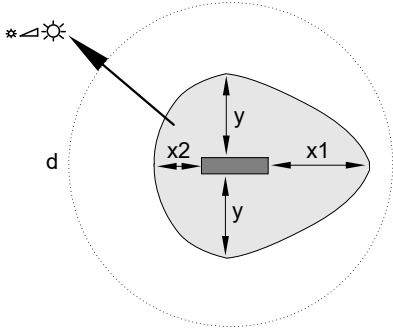
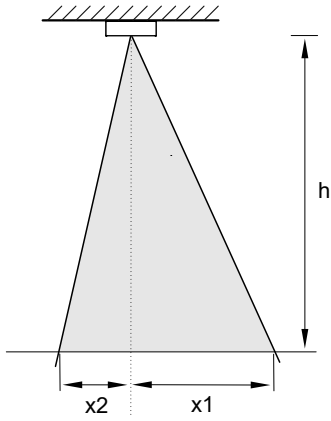
ARKA...AS...



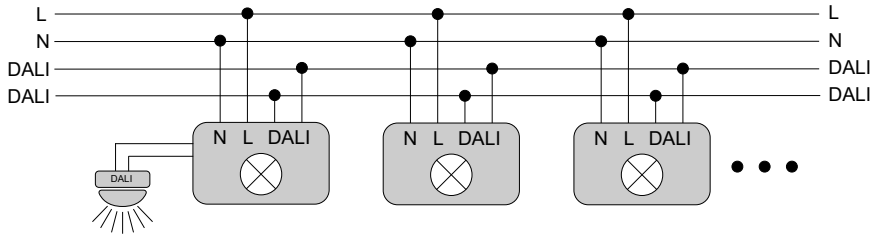
ARKA-ED...



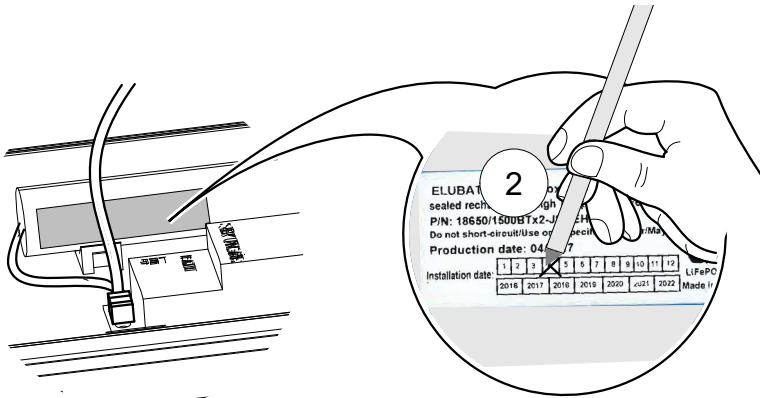
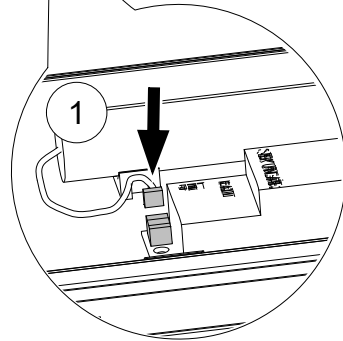
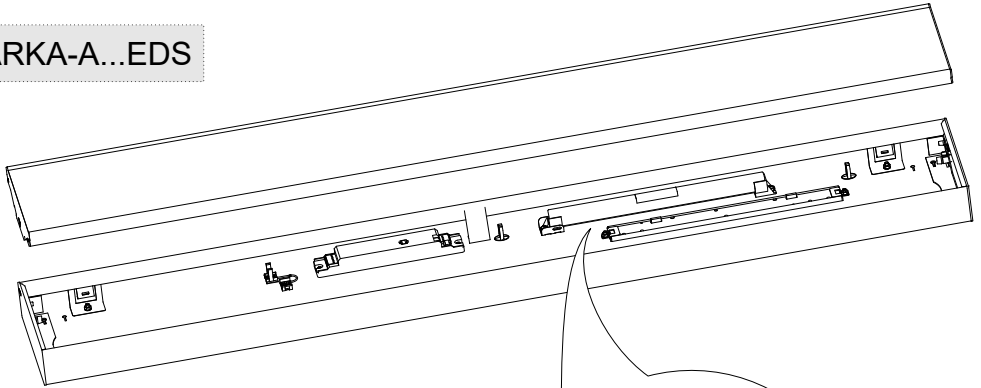
ARKA...SEN

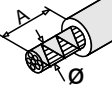


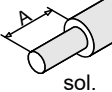
h	x1	x2	y	d
1,7 m	1,3 m	0,7 m	1,0 m	3,0 m
2,0 m	1,6 m	0,8 m	1,2 m	3,6 m
2,3 m	1,8 m	0,9 m	1,3 m	4,1 m
2,5 m	2,0 m	1,0 m	1,4 m	4,5 m
2,7 m	2,1 m	1,1m	1,6 m	4,9 m
3,0 m	2,3 m	1,2 m	1,7 m	5,4 m
3,5 m	2,7 m	1,4 m	2,0 m	6,3 m
4,0 m	3,1 m	1,6 m	2,3 m	7,2 m

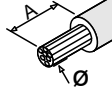


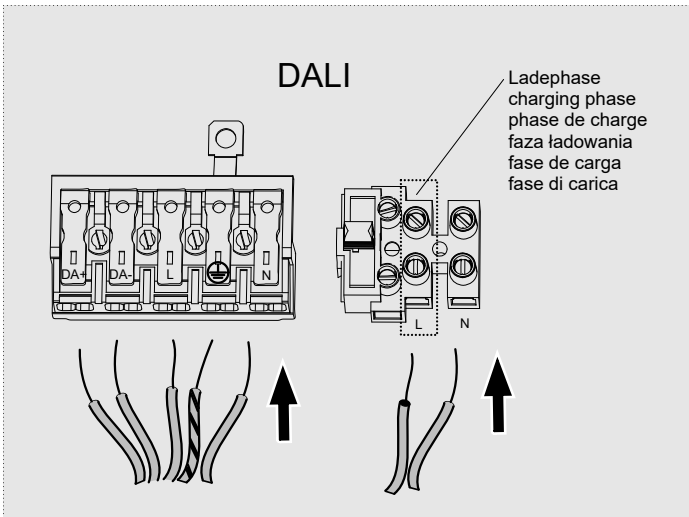
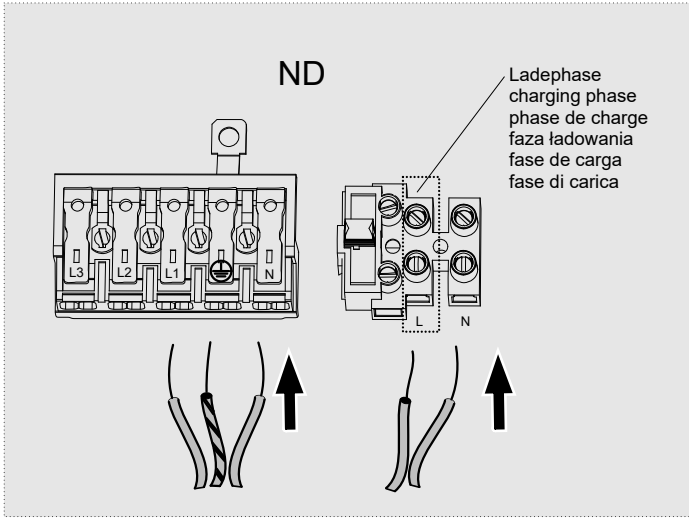
ARKA-A...EDS

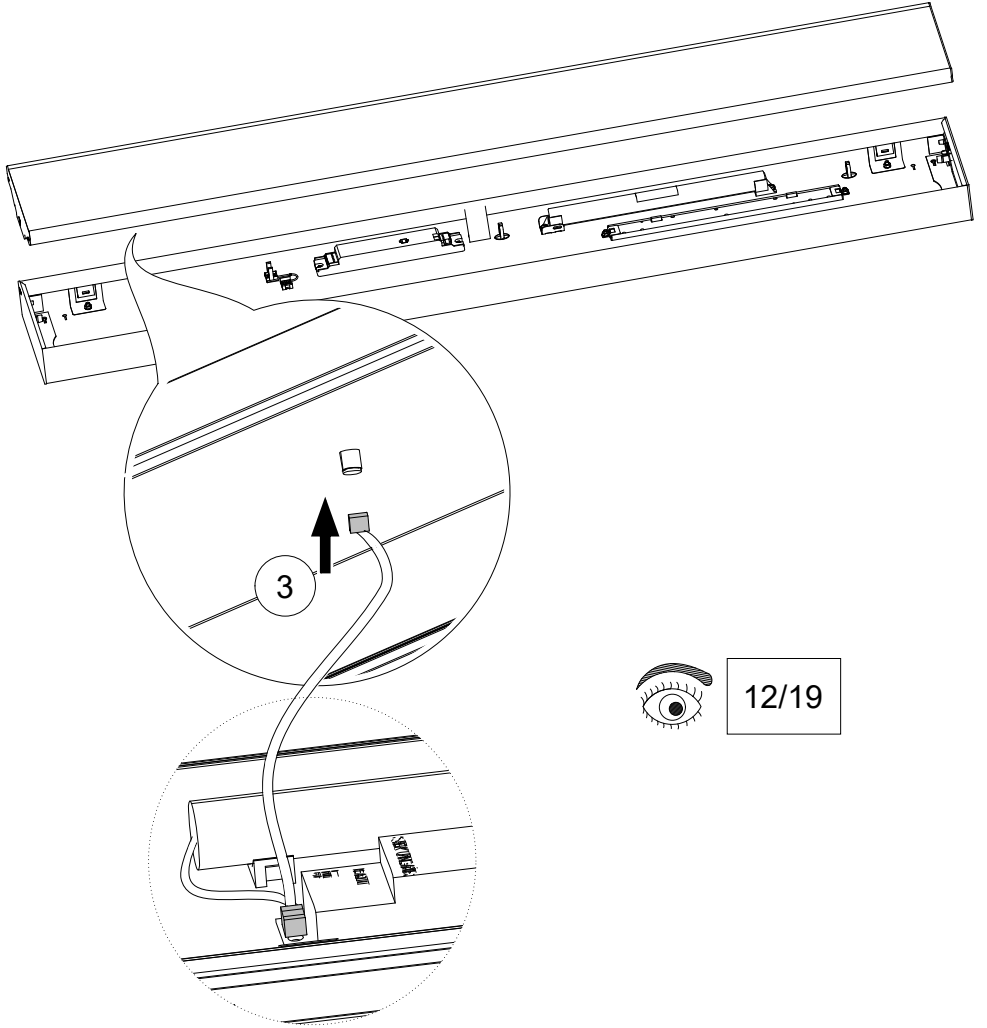


	Ø	A
	0,8-1,2	9
max. ø1,8mm	1,3-1,8	12

	mm²	A
sol.	0,5-1,0	9
0,5-2,5mm²	1,5-2,5	12

	mm²	A
	0,8-1,2	9
max. ø1,8mm	1,3-1,8	12

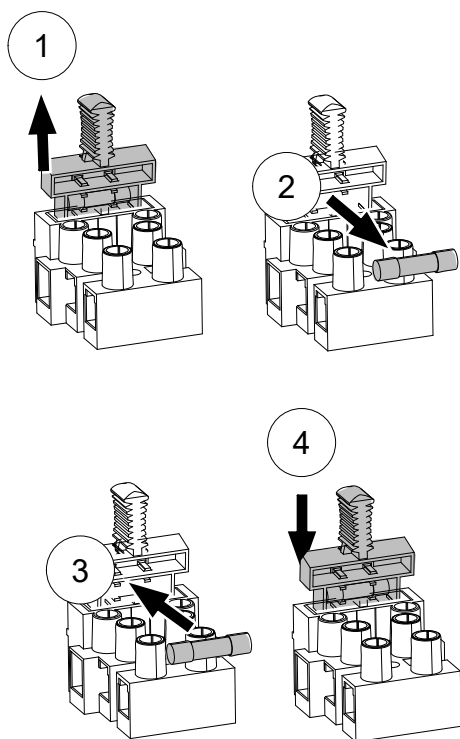




12/19



- Ⓓ Austausch nur mit der Original T 2,0A H 250 Sicherung
 - ⒼⒸ Warning: Only replace with the original T 2.0A H 250 V fuse
 - Ⓕ Attention, échange seulement avec le fusible original T 2,0A H 250
 - ⒽⒼ Uwaga, wymiana tylko na oryginalny bezpiecznik T 2,0 A H 250
 - Ⓔ Atención: cambiar solo por el fusible original T 2,0A H 250
 - Ⓘ Attenzione: cambio solo con il fusibile originale T 2,0A H 250
-



Informationen zur Inbetriebnahme

Ⓒ GB Commissioning information Ⓒ F Informations sur la mise en service Ⓒ PL Informacje o uruchomieniu
Ⓒ E Información para la puesta en servicio Ⓒ I Informazioni sulla messa in servizio

