

## DSUB SV FE SSDP ANG73-254 25PPL2GCHOLEHT

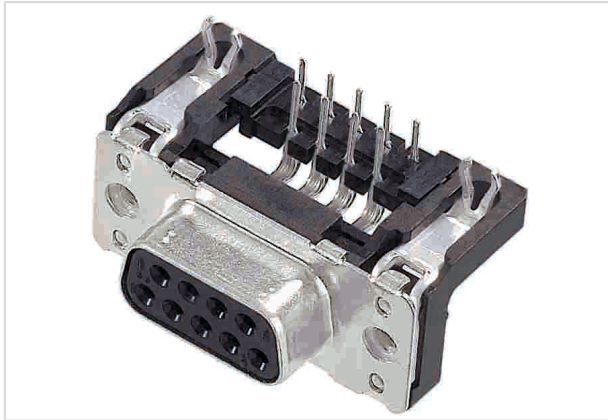


Image is for illustration purposes only. Please refer to product description.

Part number	09 66 356 6610
Specification	DSUB SV FE SSDP ANG73-254 25PPL2GCHOLEHT
HARTING eCatalogue	<a href="https://b2b.harting.com/09663566610">https://b2b.harting.com/09663566610</a>

### Identification

Category	Connectors
Series	D-Sub
Identification	Standard
Element	Connector
Description of the contact	Stamped Angled

### Version

Termination method	Reflow soldering termination (THR)
Gender	Female
Size	D-Sub 3
Connection type	Motherboard to daughtercard
Number of contacts	25
Termination length	2.9 mm
PCB fixing	With board locks
Locking type	Fixing flange with feed through hole $\varnothing$ 3.1 mm

### Technical characteristics

Distance between rows	2.54 mm
Contact spacing (termination side)	2.76 mm
Rated current	6.5 A
Clearance distance	$\geq 1$ mm
Creepage distance	$\geq 1$ mm



Pushing Performance  
Since 1945

## Technical characteristics

Insulation resistance	$>10^{10} \Omega$
Contact resistance	$\leq 10 \text{ m}\Omega$
Limiting temperature	-55 ... +125 °C (during reflow soldering max. +240 °C for 15 s)
Insertion force	$\leq 83 \text{ N}$
Withdrawal force	$\geq 7.8 \text{ N}$ $\leq 56 \text{ N}$
Performance level	2 acc. to CECC 75301-802
Mating cycles	$\geq 250$
Test voltage $U_{r.m.s.}$	1 kV
Isolation group	II ( $400 \leq \text{CTI} < 600$ )
PCB thickness	$\geq 1.6 \text{ mm}$
Installation height	7.3 mm
Hot plugging	No

## Material properties

Material (insert)	Thermoplastic resin, glass-fibre filled (PCT) Shell: steel, nickel plated
Colour (insert)	Grey
Material (contacts)	Copper alloy
Surface (contacts)	Noble metal over Ni
Material flammability class acc. to UL 94	V-0
RoHS	compliant
ELV status	compliant
China RoHS	e
REACH Annex XVII substances	Not contained
REACH ANNEX XIV substances	Not contained
REACH SVHC substances	Not contained
California Proposition 65 substances	Yes
California Proposition 65 substances	Nickel
Requirement set with Hazard Levels	R26

## Specifications and approvals

Specifications	DIN 41652
----------------	-----------



**Pushing Performance**  
Since 1945

## Commercial data

Packaging size	100
Net weight	14.83 g
Country of origin	Romania
European customs tariff number	85366990
GTIN	5713140084384
eCl@ss	27440214 D-Sub coupler