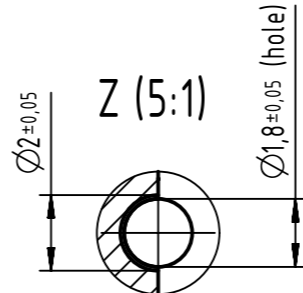
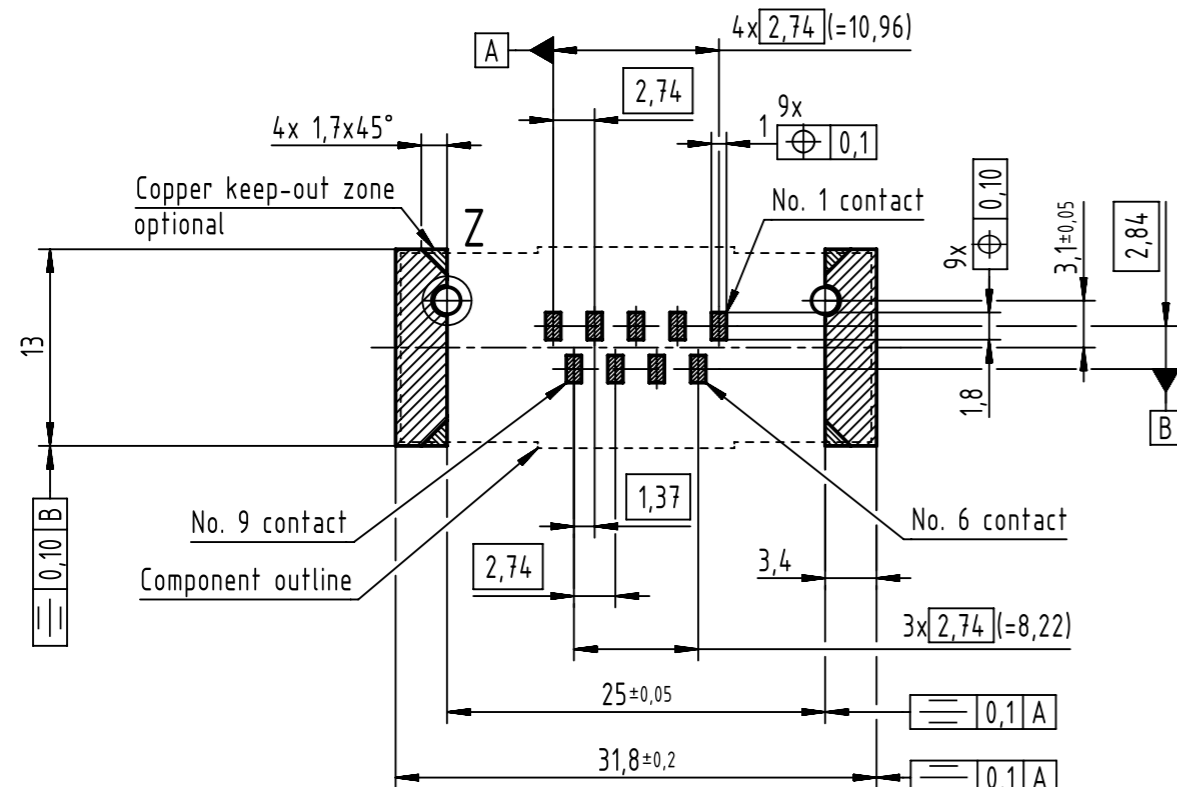


PCB layout, component side



Max. Temperature: 260°C during 10 seconds.  
Find further technical information on DS 09550200302.

0955 115 6612 333	2	4-40 UNC	Black insulator	Samples
0955 115 3612 741	1			Reel packaging (140 connectors)
0955 115 6612 741	2			
0955 115 7612 741	3			
0955 115 3611 741	1	M3		
0955 115 6611 741	2			
0955 115 7611 741	3			
Part number	PL	Nut		Index designation

All rights reserved Department EL PD HARTING Electronics GmbH D-32339 Espelkamp		All Dimensions in mm Original Size DIN A3	Scale 2:1 Free size tol.	Ref. Sub.	Created by ZHUANGJ Inspected by LUOK Standardisation HOFFMANN Date 2018-11-29 State Final Release	Title D-Sub str SMT 9-pole fem ass with screw nut and pad Type TB Number 0955115X61X	Doc-Key / ECM-Nr. 100236642/UGD/001/C 500000139800 Rev. C Page 1/1
--	--	--	-----------------------------	--------------	---	--	--