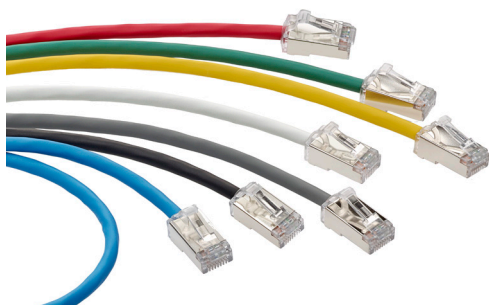


## Cat 6A Small Diameter High-Flex Patch Cords

### APPLICATION

Cat 6A Small Diameter High-Flex Patch Cords, with a compact plug and boot, are designed to be used in 10-Gigabit applications for all frequencies from 1 to 500 MHz. Patch cords offer flexible, high density patching. Patch cables provide small 0.185" (4.7 mm) OD and support high-speed data applications. They reduce patch cord density in a 24-port patch panel by 25% when compared to typical Cat 6A patch cords. They are ideal for use in a UTP Cat 6A system, or as part of a Cat 6A shielded system.



### SPECIFICATION

Patch cords shall meet or exceed electrical transmission performance requirements of links and channels as described in ANSI/TIA-568.2 (Cat 6A), ISO/IEC 11801-1 (Class E<sub>A</sub>), and EN 50173-1 (Class E<sub>A</sub>). The patch cords shall be 28 AWG, shielded, twisted pair, stranded conductor construction with a standard 8-position modular plug on both ends. Plug contacts shall be plated with minimum of 50 micro inches of gold. Patch cable shall be CM/LSZH dual rated. Patch cords shall have an outer diameter of 0.185" (4.7 mm) and shall be available in white, yellow, gray, black, red, green, and blue.

### FEATURES & BENEFITS

- Available in lengths from 1-50 feet
- Dual-rated cable jacket (CM/LSZH)
- Compact plug and boot promotes shorter installed bend radius, ideal for limited depth applications
- Bend radius is a narrow 0.74 inches, versus 1.0 inch for typical Cat 6A patch cords
- Accepts clip-on colored boot markers for network ID
- Snagless design prevents tab breakage
- Integrated strain relief
- Same cord for UTP or shielded installations
- Compatible with Leviton Secure RJ system
- GREENPACK™ Bulk Pack Sustainably Smart Packaging eliminates single use plastics in packaging and reduces jobsite time removing cords from individual bags
- GREENPACK™ supplied in 12- or 24- unit packs
- GREENPACK™ Sustainably Smart Packaging is 100% recyclable brown cardboard with reduced ink coverage
- GREENPACK™ reduces jobsite waste by eliminating all sub-level packaging
- Living Building Challenge Red List Free product

### DESIGN CONSIDERATIONS

- Channel Length:
  - Supports 96-meter channels that include 90-meter permanent links
  - Supports 93-meter channels with 10 meters of patch cords included in the channel
- Under PoE at 100 watts, must observe bundle size/bundle separation per TIA TSB-184-A
- GREENPACK™ patch cords packed in either 12 or 24 cords per box

### WARRANTY INFORMATION

For Leviton product warranties, go to [Leviton.com/ns/warranty](http://Leviton.com/ns/warranty)

H6A10-XX\*, H6AP0-XX\*

## PRODUCT SPECIFICATIONS

H6A10-XX\*, H6AP0-XX\*

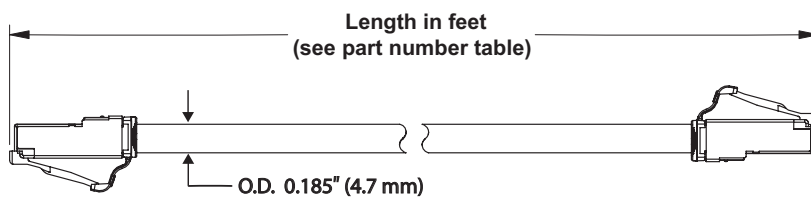
### MECHANICAL SPECIFICATIONS

Dimensions: 1-50 foot lengths (0.3-15 m)  
Materials: 28 AWG, stranded U/FTP, standard modular non-keyed, 8-position, 8-conductor plug, 94V-0 rated  
Cable Outer Diameter: 0.185 inches (4.7 mm)  
Bend Radius: 0.74 inches (18.8 mm)  
Temp. (Storage): -20 °C to +70 °C (-4 °F to +158 °F)  
Temp. (Installation): 0 °C to +50 °C (+32 °F to +122 °F)  
Temp. (Operating): -20 °C to +60 °C (-4 °F to +140 °F)  
Humidity (Max): 93% relative humidity, non-condensing  
UL voltage rating: 300 V

### STANDARDS & REGULATIONS

- ANSI/TIA-568.2
- ISO/IEC 11801-1
- EN 50173-1
- IEC 61156-6
- ANSI/TIA-1096-A (formerly FCC Part 68)
- UL 444 CM Rated
- IEC 60332-1-2, 60754-2, 61034
- IEC 60603-7
- IEC 60603-7-1
- IEEE 802.3 PoE Type 1, 2, 3, 4 (100 watts max)
- Cisco UPOE, UPOE+ (90 watts max)
- Power over HDBaseT™ PoH (95 watts max)
- Exceeds IEEE 802.3 standard up to 0.5 amps per conductor (100 watts) continuously
- Fully supports the safe delivery of power over LAN cabling described by IEEE 802.3 (Type 4) and complies with the unmating under electrical load requirements prescribed by IEC 60512-99-002
- c(UL)us Listed (UL 1863)
- RoHS compliant

H6A10-XX\*, H6AP0-XX\*



GREENPACK™ Bulk Pack Packaging

## PRODUCT SPECIFICATIONS

### H6A10-XX\*, H6AP0-XX\*

EUROPE, MIDDLE EAST AND APAC						
Description	White	Yellow	Red	Blue	Green	Gray
Patch Cord, 1 foot (0.3 m), GREENPACK™ of 24	H6AP0-01W	H6AP0-01Y	H6AP0-01R	H6AP0-01L	H6AP0-01G	H6AP0-01S
Patch Cord, 2 feet (0.6 m), GREENPACK of 24	H6AP0-02W	H6AP0-02Y	H6AP0-02R	H6AP0-02L	H6AP0-02G	H6AP0-02S
Patch Cord, 3 feet (0.9 m), GREENPACK of 24	H6AP0-03W	H6AP0-03Y	H6AP0-03R	H6AP0-03L	H6AP0-03G	H6AP0-03S
Patch Cord, 4 feet (1.2 m), GREENPACK of 24	H6AP0-04W	H6AP0-04Y	H6AP0-04R	H6AP0-04L	H6AP0-04G	H6AP0-04S
Patch Cord, 5 feet (1.5 m), GREENPACK of 24	H6AP0-05W	H6AP0-05Y	H6AP0-05R	H6AP0-05L	H6AP0-05G	H6AP0-05S
Patch Cord, 7 feet (2.1m), GREENPACK of 24	H6AP0-07W	H6AP0-07Y	H6AP0-07R	H6AP0-07L	H6AP0-07G	H6AP0-07S
Patch Cord, 10 feet (3.0 m), GREENPACK of 24	H6AP0-10W	H6AP0-10Y	H6AP0-10R	H6AP0-10L	H6AP0-10G	H6AP0-10S
Patch Cord, 12 feet (3.7 m), GREENPACK of 12	H6AP0-12W	H6AP0-12Y	H6AP0-12R	H6AP0-12L	H6AP0-12G	H6AP0-12S
Patch Cord, 14 feet (4.3 m), GREENPACK of 12	H6AP0-14W	H6AP0-14Y	H6AP0-14R	H6AP0-14L	H6AP0-14G	H6AP0-14S
Patch Cord, 15 feet (4.6 m), GREENPACK of 12	H6AP0-15W	H6AP0-15Y	H6AP0-15R	H6AP0-15L	H6AP0-15G	H6AP0-15S
Patch Cord, 17 feet (5.2 m), GREENPACK of 12	H6AP0-17W	H6AP0-17Y	H6AP0-17R	H6AP0-17L	H6AP0-17G	H6AP0-17S
Patch Cord, 20 feet (6.1 m), GREENPACK of 12	H6AP0-20W	H6AP0-20Y	H6AP0-20R	H6AP0-20L	H6AP0-20G	H6AP0-20S

NORTH AMERICA AND LATIN AMERICA								
Description	White	Yellow	Red	Blue	Green	Gray	Black	GREENPACK™ Blue 12- or 24-Count Pack
Patch Cord, 1 foot (0.3 m)	H6A10-01W	H6A10-01Y	H6A10-01R	H6A10-01L	H6A10-01G	H6A10-01S	H6A10-01E	H6AP0-01L (24 pk)
Patch Cord, 2 feet (0.6 m)	H6A10-02W	H6A10-02Y	H6A10-02R	H6A10-02L	H6A10-02G	H6A10-02S	H6A10-02E	—
Patch Cord, 3 feet (0.9 m)	H6A10-03W	H6A10-03Y	H6A10-03R	H6A10-03L	H6A10-03G	H6A10-03S	H6A10-03E	H6AP0-03L (24 pk)
Patch Cord, 4 feet (1.2 m)	H6A10-04W	H6A10-04Y	H6A10-04R	H6A10-04L	H6A10-04G	H6A10-04S	H6A10-04E	—
Patch Cord, 5 feet (1.5 m)	H6A10-05W	H6A10-05Y	H6A10-05R	H6A10-05L	H6A10-05G	H6A10-05S	H6A10-05E	H6AP0-05L (24 pk)
Patch Cord, 6 feet (1.8 m)	H6A10-06W	H6A10-06Y	H6A10-06R	H6A10-06L	H6A10-06G	H6A10-06S	H6A10-06E	—
Patch Cord, 7 feet (2.1 m)	H6A10-07W	H6A10-07Y	H6A10-07R	H6A10-07L	H6A10-07G	H6A10-07S	H6A10-07E	H6AP0-07L (24 pk)
Patch Cord, 8 feet (2.4 m)	H6A10-08W	H6A10-08Y	H6A10-08R	H6A10-08L	H6A10-08G	H6A10-08S	H6A10-08E	—
Patch Cord, 9 feet (2.7 m)	H6A10-09W	H6A10-09Y	H6A10-08R	H6A10-09L	H6A10-09G	H6A10-09S	H6A10-09E	—
Patch Cord, 10 feet (3.0 m)	H6A10-10W	H6A10-10Y	H6A10-10R	H6A10-10L	H6A10-10G	H6A10-10S	H6A10-10E	H6AP0-10L (24 pk)
Patch Cord, 11 feet (3.3 m)	H6A10-11W	H6A10-11Y	H6A10-11R	H6A10-11L	H6A10-11G	H6A10-11S	H6A10-11E	—
Patch Cord, 12 feet (3.7 m)	H6A10-12W	H6A10-12Y	H6A10-12R	H6A10-12L	H6A10-12G	H6A10-12S	H6A10-12E	—
Patch Cord, 13 feet (3.9 m)	H6A10-13W	H6A10-13Y	H6A10-13R	H6A10-13L	H6A10-13G	H6A10-13S	H6A10-13E	—
Patch Cord, 14 feet (4.3 m)	H6A10-14W	H6A10-14Y	H6A10-14R	H6A10-14L	H6A10-14G	H6A10-14S	H6A10-14E	—
Patch Cord, 15 feet (4.6 m)	H6A10-15W	H6A10-15Y	H6A10-15R	H6A10-15L	H6A10-15G	H6A10-15S	H6A10-15E	H6AP0-15L (12 pk)
Patch Cord, 16 feet (4.9 m)	H6A10-16W	H6A10-16Y	H6A10-16R	H6A10-16L	H6A10-16G	H6A10-16S	H6A10-16E	—
Patch Cord, 17 feet (5.2 m)	H6A10-17W	H6A10-17Y	H6A10-17R	H6A10-17L	H6A10-17G	H6A10-17S	H6A10-17E	—
Patch Cord, 18 feet (5.5 m)	H6A10-18W	H6A10-18Y	H6A10-18R	H6A10-18L	H6A10-18G	H6A10-18S	H6A10-18E	—
Patch Cord, 19 feet (5.8 m)	H6A10-19W	H6A10-19Y	H6A10-19R	H6A10-19L	H6A10-19G	H6A10-19S	H6A10-19E	—
Patch Cord, 20 feet (6.1 m)	H6A10-20W	H6A10-20Y	H6A10-20R	H6A10-20L	H6A10-20G	H6A10-20S	H6A10-20E	H6AP0-20L (12 pk)

Note: Lengths from 3-20 feet are component rated; all other lengths are channel rated. Additional lengths and colors available. Please contact Customer Service for details.

Compatible with Patch Cord Color Clips, available in Blue (L), Red (C), Green (V) or Yellow (Y) in bags of 24 pieces (Part Number: PCCLP-B\*M).

Additional lengths and colors, such as Orange (O) and Violet (V), available.

For further support information, visit [Leviton.com/ns/support](http://Leviton.com/ns/support)