

## Wall mounting socket outlet - 7 poles, housing dimensions 126x83

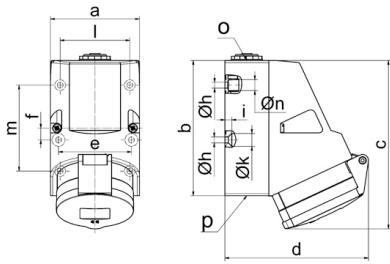


| Product description           |                                |
|-------------------------------|--------------------------------|
| BALS-Prd.-Nr                  | 11480                          |
| EAN                           | 4024941114806                  |
| product category (PG)         | TE wall mounting socket outlet |
| current (A)                   | 16A                            |
| number of poles (P99)         | 7p                             |
| number of poles (P)           | 6p+PE                          |
| position of earth contact (H) | 9 h                            |
| voltage (V)                   | 230V                           |

| Product description         |  |
|-----------------------------|--|
| frequency (HZ)              | 50 and 60Hz  |
| protection degree (SA)      | IP44   |
| colour code 1 (KF1)         | blue RAL 5015  |
| Colour of appliance         | Hinged lid blue RAL 5015, Housing bottom grey RAL 7035, Housing top grey RAL 7035, Collar grey RAL 7035  |
| connection design (AT)      | with screw terminal  |
| maximum conductor size (LQ) | 4,0 qmm  |
| cable entry (KE)            | 1xM25 top, 2xM25 bottom  |
| Height                      | 154mm  |
| Width                       | 83mm   |
| Depth                       | 130mm  |
| dimension of enclosure (GG) | 126x83 mm (HxW)  |
| material of enclosure (GM)  | Polyamide  |
| contact                     | The contact carrier is made of high temperature resistant material, the contacts are brass nickel plated |

| Additional technical properties |   |
|---------------------------------|---|
|                                 | The cable entry is one at top open and two at bottom closed |
|                                 | Lower part of housing rotatable by 180°                     |
|                                 | 4 cut out fixing holes in the lower part of housing         |

| Logistics data |                  |
|----------------|------------------|
| Weight/pcs     | 0.373 kg / Piece |
| Packaging      | Bag              |
| Content amount | 1 ST             |
| EAN            | 4024941114806    |
| Length         | 130 mm           |
| Width          | 83 mm            |
| Height         | 154 mm           |
| Weight         | 0.374 kg         |
| Volume         | 1,661.66 ccm     |
| Packaging      | Carton           |
| Content amount | 10 ST            |
| EAN            | 4024941969352    |
| Length         | 330 mm           |
| Width          | 216 mm           |
| Height         | 260 mm           |
| Weight         | 3.956 kg         |
| Volume         | 17,062.5 ccm     |



1 MB 124

| Ampere                     | 16      | 32      |  |  |  |  |  |
|----------------------------|---------|---------|--|--|--|--|--|
| Polzahl                    | 7       | 7       |  |  |  |  |  |
| a                          | 83,0    | 83,0    |  |  |  |  |  |
| b                          | 126,0   | 126,0   |  |  |  |  |  |
| c                          | 155,0   | 155,0   |  |  |  |  |  |
| d                          | 130,0   | 136,0   |  |  |  |  |  |
| e                          | 68,0    | 68,0    |  |  |  |  |  |
| f                          | 11,0    | 11,0    |  |  |  |  |  |
| h ø                        | 5,5     | 5,5     |  |  |  |  |  |
| i                          | 6,5     | 6,5     |  |  |  |  |  |
| k ø                        | 12,0    | 12,0    |  |  |  |  |  |
| l                          | 65,0    | 65,0    |  |  |  |  |  |
| m                          | 80,0    | 80,0    |  |  |  |  |  |
| n ø                        | 10,0    | 10,0    |  |  |  |  |  |
| o                          | M25     | M25     |  |  |  |  |  |
| p                          | 2 x M25 | 2 x M25 |  |  |  |  |  |
| Leiter mm <sup>2</sup> min | 1,5     | 2,2     |  |  |  |  |  |
| Leiter mm <sup>2</sup> max | 4       | 10      |  |  |  |  |  |