

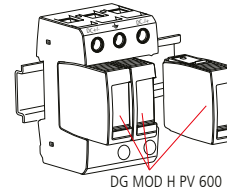
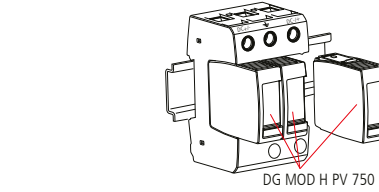
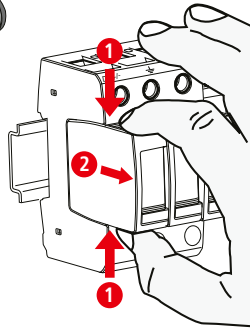
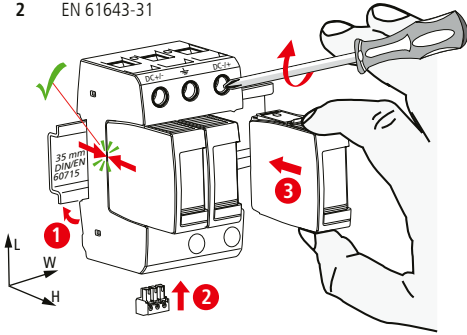
DEHNguard modular DG M YPV 1200 / 1500 FM

DG M YPV 1200 FM DG M YPV 1500 FM

- DE Einbauanleitung
- GB Installation instructions
- IT Istruzioni di montaggio
- FR Instructions de montage
- NL Montagehandleiding
- ES Instrucciones de montaje
- PT Instruções de montagem
- DK Monteringsvejledning
- SE Monteringsanvisning
- FI Asennusohje
- GR Οδηγίες συναρμολόγησης
- PL Instrukcja montażu
- CZ Montážní návod
- TR Kurulum Talimatları
- RU Инструкция по монтажу
- CN 安装说明
- HU Szerelési útmutató
- JP 設置説明書



2 EN 50539-11... PZ 2 (4 Nm)

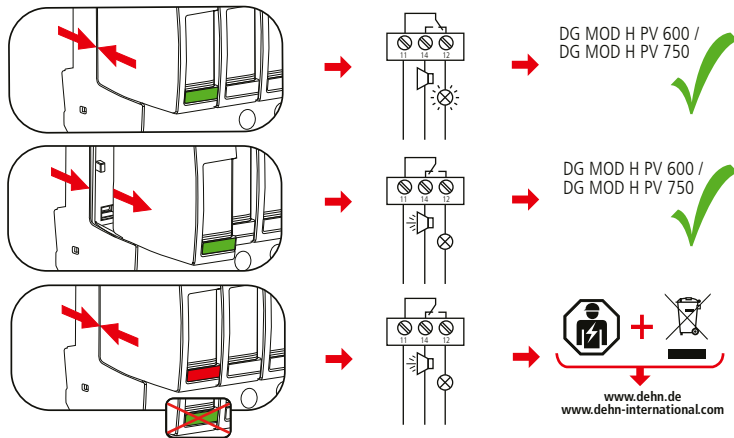
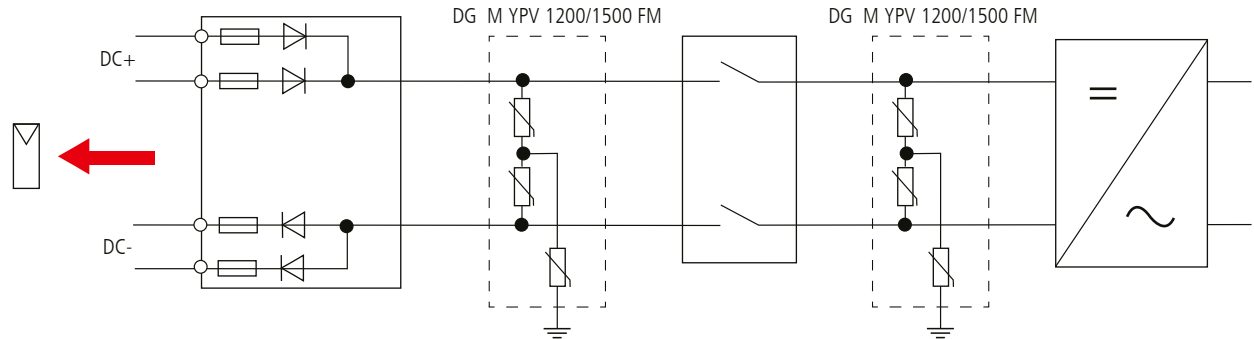
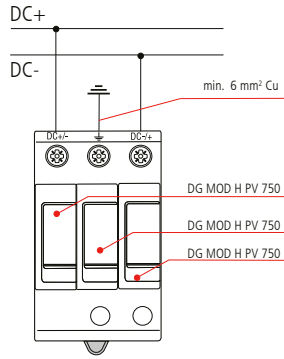
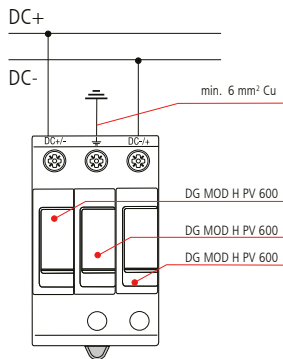


	DG M YPV 1200 FM DG MOD H PV 600	DG M YPV 1500 FM DG MOD H PV 750
U _{CPV}	1170 V	1500 V
I _{total}	40 kA	40 kA
I _{max}	40 kA	40 kA
I _{scpv}	10 kA	10 kA
I _{cpv}	≤ 50 μA	≤ 50 μA
I _n	20 kA	15 kA
U _p	4 kV	5 kV
I _{FE AC}	600 μA	600 μA
I _{FE DC}	50 μA	50 μA
θ° C	-40°C ... +80°C	-40°C ... +80°C
Φ	5% ... 95%	5% ... 95%
IP	20	20
failure behavior/ Ausfallverhalten	open circuit / Abtrennung	open circuit / Abtrennung
PV system	earthed / geerdet	earthed / geerdet
L x W x H	90 mm x 54 mm x 73 mm	90 mm x 54 mm x 73 mm

	12 mm	12 mm	12 mm
min. □ DC+/-, DC-/+	1.5 mm ²	1.5 mm ²	1.5 mm ²
max. □ DC+/-, DC-/+	25 mm ²	35 mm ²	35 mm ²
□ ⚠	16 mm ² Cu	≥15.5 mm	≥15.5 mm

DG M YPV 1200 FM

DG M YPV 1500 FM



DEHNguard modular DG M YPV 1200 FM, DG M YPV 1500 FM

UN / IN	AC: 250 V / 0.5 A
	DC: 250 V / 0.1 A 125 V / 0.2 A 75 V / 0.5 A
max. 1.5 mm ²	

