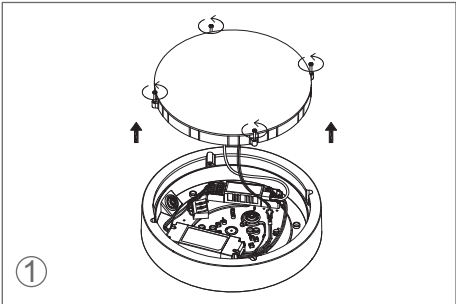
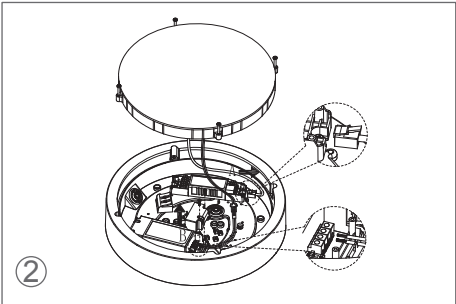


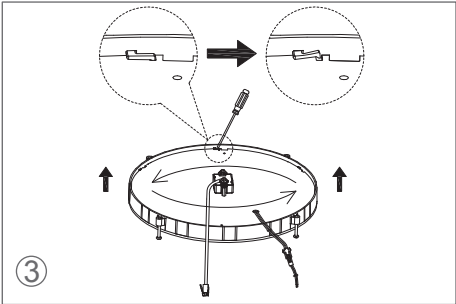
Instruction for Light Source Disassembly



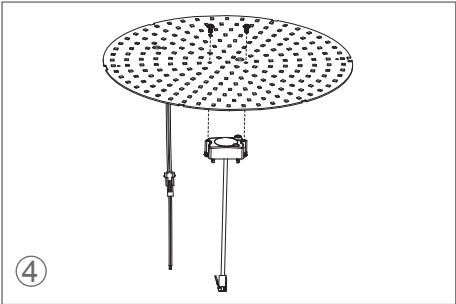
1
Unscrew the diffuser anticlockwise and vertically take it out.



2
a. Disconnect RJ12..
b. Use a screwdriver to remove the DC cover off the driver, and disconnect the DC power cable.



3
On the reverse of diffuser, use the screwdriver to pry the clips to release the PCBA, then twist the PCBA anticlockwise.

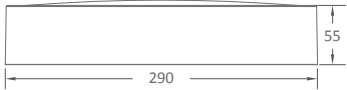


4
Take out the PCBA (light source) from the diffuser.

OPERATING MANUAL

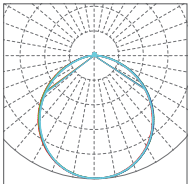
Brida - Bluetooth + Sensor CCT

Important: Please read the instruction manual carefully prior to installation and keep it for future reference.

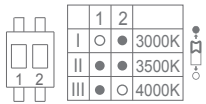


Ordering Code	Product	Power (W)	Function Description
	Fitting Series		
Brida Sensor Master/Slave CCT	Brida	18	Bluetooth + HF sensor, colour temperature selectable, power switchable

Mounting: Wall or Ceiling
Light features:
Ra: >80
Life Time: 5 years
Light Source: LED SMD2835
Input: 220V-240V 50/60Hz



CCT:



Electric Current	Power
400mA	11W
450mA	12W
500mA	14W
550mA	15W
600mA	16W
650mA	17W
700mA	18W

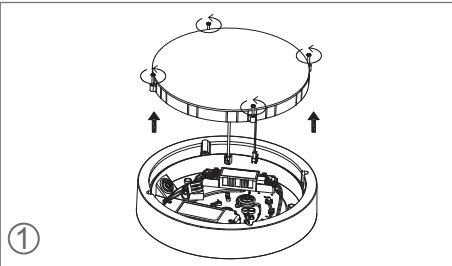
Colour Temperature Code

Code	Colour Temperature	CCT(K)	Lumen
30K	Warm White	3000	2070
35K	Natural White	3500	2160
40K	Cool White	4000	2196

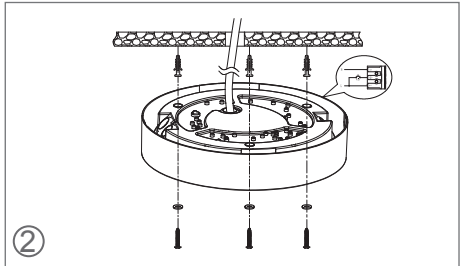
Accessories

No.	Pic.	Qty.	Usage
1		3	Fix light
2		3	Rawl plug
3		1	Vandal proof screw tool
4		3	Plastic washer
5		2	Fix cable clip
6		1	Cable clip
7		1	Cable clip
8		4	Plastic plug

Installation

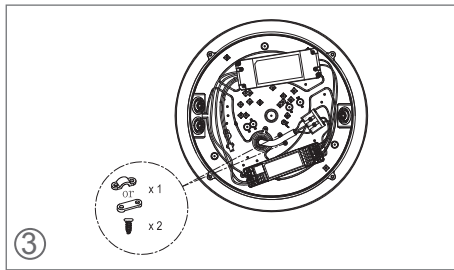


1
Unscrew the diffuser anticlockwise. Vertically remove the diffuser and PCBA.

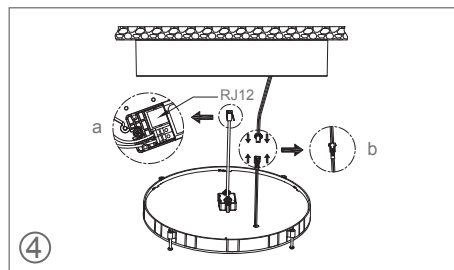


2
a. Cut off the power. Thread the input cable through the rubber plug to the fixture. Connect the L, PUSH, N wire referring to the wiring diagram.
b. Knock the rawl plugs into the pre-drilled holes on ceiling/wall. Wear plastic washers on self-tapping screws and tighten them to fix the fixture on ceiling/wall.

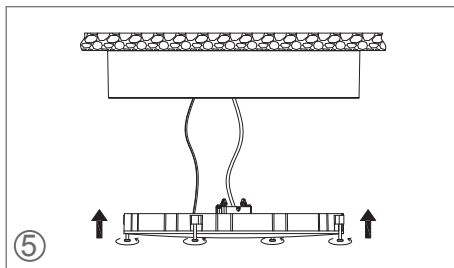
* This product contains a light source of energy efficiency class <D>



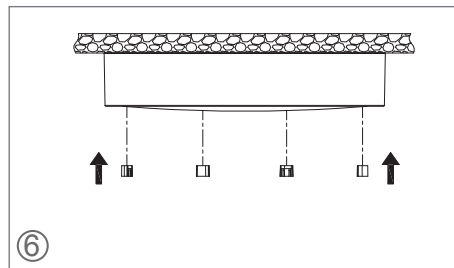
Install the cable clip.



a. Connect RJ12 with Bluetooth driver.
b. Connect the DC cable.

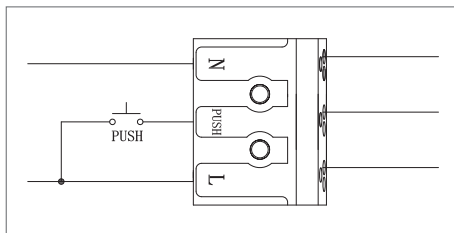


Mount the diffuser onto the base with screws.



Install the plastic plugs to hide the screws.

Wiring



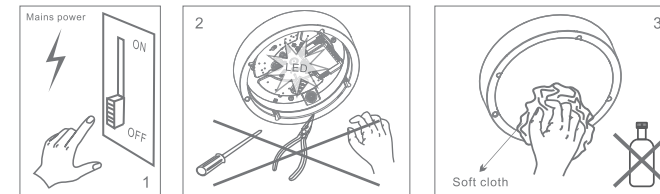
Function

1. Download free APP for set-up and commissioning.
2. Sensor setting can be configured via Koolmesh APP.



Maintenance

1. Cut off the main power first.
2. Don't touch LEDs while maintaining or cleaning.
3. Don't use chemicals to clean the fixture.

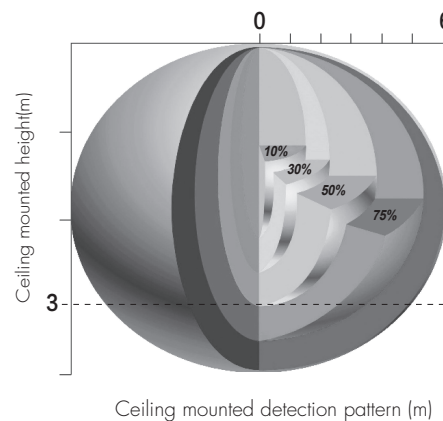


Environmental protection: waste electrical products should not be disposed of with household waste. Please recycle where facilities exist. Check with your local authority or retailer for recycling advice.

Caution

1. The product must be installed by professional technicians and power supply must be cut off before installation.
2. The diameter for AC input wire is 0.75mm² (complying with 60245 IEC57), which complies with the latest IEE electrical standards or national standards.
3. Do not touch the electronic circuit and its components.
4. Contact an authorised technical service centre for any repairs possibly required use only original spare parts.
5. Do not touch LED while installing or maintaining.
6. Sealing the entrance hole with glue after install is needed.
7. The light source contained in this luminaire shall only be replaced by the manufacturer or his service agent or a similar qualified person.

Detection Pattern (Ceiling Mounted)



Ceiling mounted detection pattern (m)

