

D SUB MA CRIMP 9P with 4-40 UNC rear nut

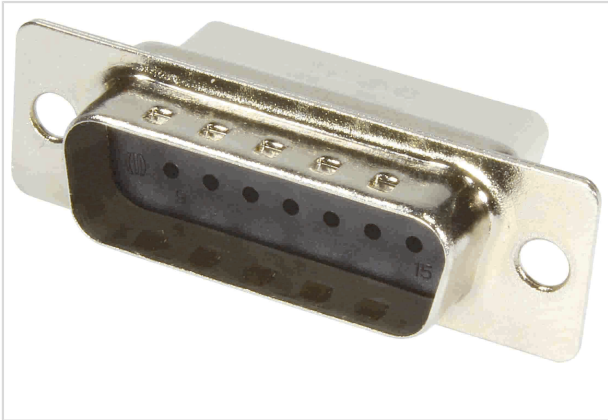


Image is for illustration purposes only. Please refer to product description.

Part number	09 67 009 5602
Specification	D SUB MA CRIMP 9P with 4-40 UNC rear nut
HARTING eCatalogue	https://b2b.harting.com/09670095602

Identification

Category	Connectors
Series	D-Sub
Identification	Standard
Element	Connector

Version

Termination method	Crimp termination
Gender	Male
Size	D-Sub 1
Connection type	PCB to cable Cable to cable
Number of contacts	9
Locking type	Fixing flange with thread 4-40 UNC

Technical characteristics

Conductor cross-section	0.09 ... 0.82 mm ²
Conductor cross-section	AWG 28 ... AWG 18
Clearance distance	≥1 mm
Creepage distance	≥1 mm
Insulation resistance	>10 ¹⁰ Ω
Tightening torque	≤0.6 Nm Female screw lock
Limiting temperature	-55 ... +125 °C
Insertion force	≤30 N



Pushing Performance
Since 1945

Technical characteristics

Withdrawal force	≥3.3 N ≤20 N
Test voltage $U_{r.m.s.}$	1 kV
Hot plugging	No

Material properties

Material (insert)	Thermoplastic resin, glass-fibre filled (PBTP) Shell: Plated steel
Colour (insert)	Black
Material (contacts)	Copper alloy
Material flammability class acc. to UL 94	V-0
RoHS	compliant with exemption
RoHS exemptions	6(a) / 6(a)-I: Lead as an alloying element in steel for machining purposes and in galvanised steel containing up to 0,35 % lead by weight / Lead as an alloying element in steel for machining purposes containing up to 0,35 % lead by weight and in batch hot dip galvanised steel components containing up to 0,2 % lead by weight
ELV status	compliant with exemption
China RoHS	50
REACH Annex XVII substances	Not contained
REACH ANNEX XIV substances	Not contained
REACH SVHC substances	Yes
REACH SVHC substances	Lead
ECHA SCIP number	ecef7555-f643-4ceb-a337-fc54762297f1
California Proposition 65 substances	Yes
California Proposition 65 substances	Lead

Specifications and approvals

Specifications	DIN 41652 IEC 60807-3 CECC 75301-802
UL / CSA	UL 1977 ECBT2.E102079

Commercial data

Packaging size	100
Net weight	6.38 g
Country of origin	Germany



Pushing Performance
Since 1945

Commercial data

European customs tariff number	85389099
GTIN	5713140089648
eCl@ss	27440214 D-Sub coupler
