

5

4

3

2

1

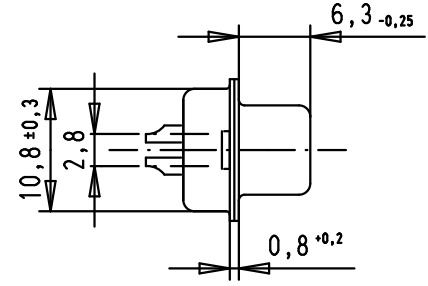
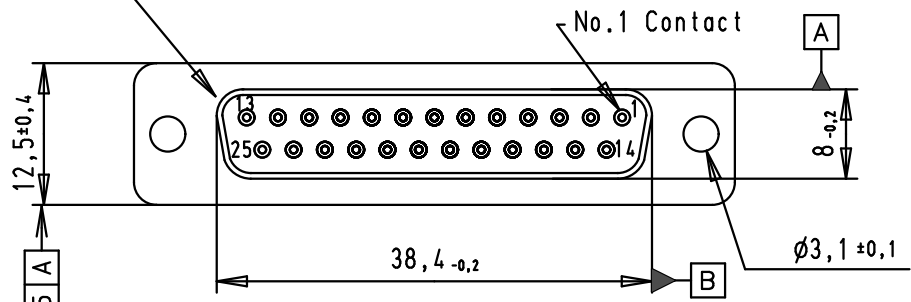
SPECIFICATION

Performance level	PL2
Filter type	C
Capacitance	47pf±20%
Working Voltage	100V
Current Rating	7,5Amp
Insulation Resistance	>1GΩ

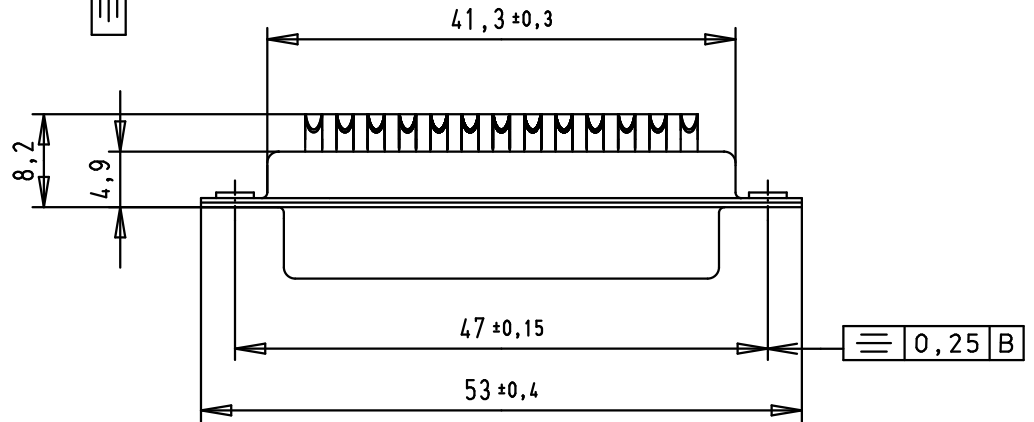
Minimum Insertion Loss

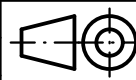

FREQUENCY (MHz)	ATTENUATION dB
5	-
10	-
50	-
100	-
500	30dB
1000	35dB

Mating face according to : MIL -C-24308 / DIN 41652 / 75301-802



Max wire ø 1,0 mm



				Dot.	Name		All Dim. in mm Orig. Size DIN A 4
			Detail.	8-JUL-02	CV		
			Insp.	12/01/12	JB		
			Stand.				
36283	12/01/12	SD					
31897	17/05/04	AF					
31058	8-Jul-02	CV					
Mod.	Dot.	Name	HARTING EURL F-95972 Paris				

D-Sub, female, straight,
25 Poles, with turned
solder bucket and hole

Mo?Mstab/
Scale
1.5:1

TB 09643117210

Blatt/ Page
1 / 1

Sub.

D

C

B

A