

## DSUB SV MA IDC 37P AU3 NUT 4-40

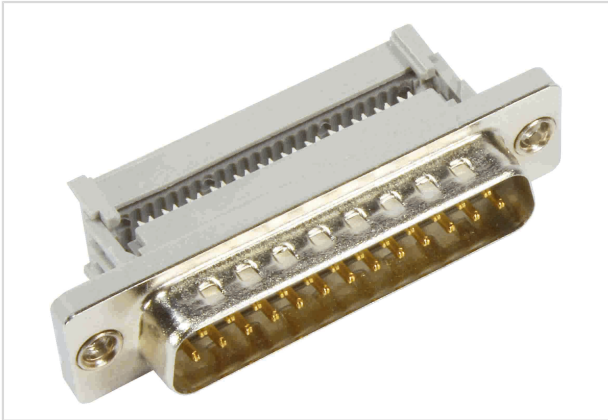


Image is for illustration purposes only. Please refer to product description.

|                    |   |
|--------------------|---|
| Part number        | 09 66 428 7702  |
| Specification      | DSUB SV MA IDC 37P AU3 NUT 4-40   |
| HARTING eCatalogue | <a href="https://b2b.harting.com/09664287702">https://b2b.harting.com/09664287702</a> |

### Identification

|                            |                     |
|----------------------------|---------------------|
| Category                   | Connectors          |
| Series                     | D-Sub               |
| Identification             | Standard            |
| Element                    | Connector           |
| Description of the contact | Stamped<br>Straight |

### Version

|                    |   |
|--------------------|---|
| Termination method | IDC insulation displacement termination |
| Gender             | Male                                    |
| Size               | D-Sub 4                                 |
| Connection type    | PCB to cable<br>Cable to cable          |
| Number of contacts | 37                                      |
| Locking type       | Fixing flange with thread 4-40 UNC      |

### Technical characteristics

|                         |                               |
|-------------------------|-------------------------------|
| Conductor cross-section | 0.09 ... 0.13 mm <sup>2</sup> |
| Conductor cross-section | AWG 28 ... AWG 26             |
| Rated current           | 2 A                           |
| Clearance distance      | ≥0.7 mm                       |
| Creepage distance       | ≥0.7 mm                       |
| Insulation resistance   | >10 <sup>10</sup> Ω           |
| Contact resistance      | ≤10 mΩ                        |



Pushing Performance  
Since 1945

## Technical characteristics

|                           |                           |
|---------------------------|---------------------------|
| Tightening torque         | ≤0.6 Nm Female screw lock |
| Limiting temperature      | -55 ... +125 °C           |
| Insertion force           | ≤123 N                    |
| Withdrawal force          | ≥11 N<br>≤82 N            |
| Performance level         | 3                         |
| Mating cycles             | ≥50                       |
| Test voltage $U_{r.m.s.}$ | 1 kV                      |
| Hot plugging              | No                        |

## Material properties

|   |   |
|---|---|
| Material (insert)                         | Thermoplastic resin, glass-fibre filled (PBTP)<br>Shell: Plated steel |
| Colour (insert)                           | Black   |
| Material (contacts)                       | Copper alloy  |
| Surface (contacts)                        | Noble metal over Ni   |
| Material flammability class acc. to UL 94 | V-0   |
| RoHS                                      | compliant with exemption  |
| RoHS exemptions                           | 6(c): Copper alloy containing up to 4 % lead by weight                |
| ELV status                                | compliant with exemption  |
| China RoHS                                | 50  |
| REACH Annex XVII substances               | Not contained   |
| REACH ANNEX XIV substances                | Not contained   |
| REACH SVHC substances                     | Yes   |
| REACH SVHC substances                     | Lead  |
| ECHA SCIP number                          | 5f2b96e8-feaf-4131-b3cd-8b723c130d93                                  |
| California Proposition 65 substances      | Yes   |
| California Proposition 65 substances      | Lead  |

## Specifications and approvals

|                |                       |
|----------------|-----------------------|
| Specifications | DIN 41652             |
| UL / CSA       | UL 1977 ECBT2.E102079 |

## Commercial data

|                |    |
|----------------|----|
| Packaging size | 50 |
|----------------|----|



**Pushing Performance**  
Since 1945

## Commercial data

|                                |                        |
|--------------------------------|------------------------|
| Net weight                     | 20.58 g                |
| Country of origin              | China                  |
| European customs tariff number | 85366990               |
| GTIN                           | 5713140085329          |
| eCl@ss                         | 27440214 D-Sub coupler |