

DEHNguard modular DG M TNC ACI 275 FM

DG M TNS ACI 275 FM

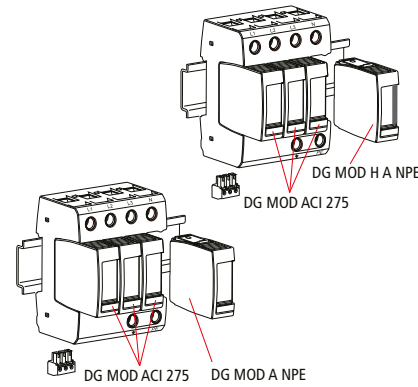
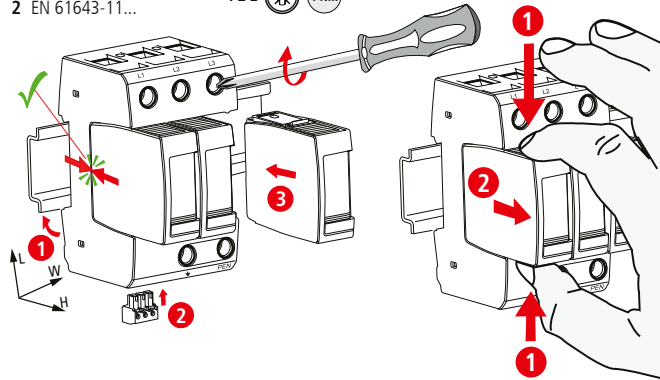
DG M TT ACI 275 FM

- DE Einbauanleitung
- GB Installation instructions
- IT Istruzioni di montaggio
- FR Instructions de montage
- NL Montagehandleiding
- ES Instrucciones de montaje
- PT Instruções de montagem
- DK Monteringsvejledning
- SE Monteringsanvisning
- FI Asennusohje
- GR Οδηγίες συναρμολόγησης
- PL Instrukcja montażu
- CZ Návod k montáži
- TR Montaj kılavuzu
- RU Инструкция по монтажу
- CN 安装说明
- HU Szerelési útmutató
- JP 設置説明書



II IEC 61643-11...
2 EN 61643-11...

PZ 2 4 Nm



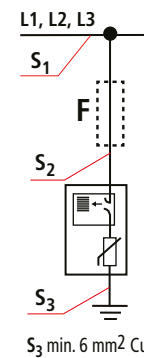
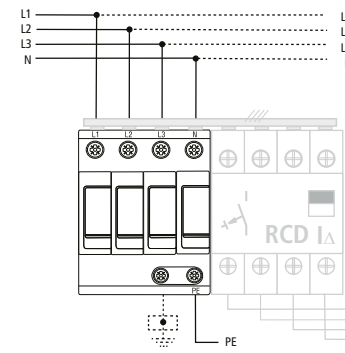
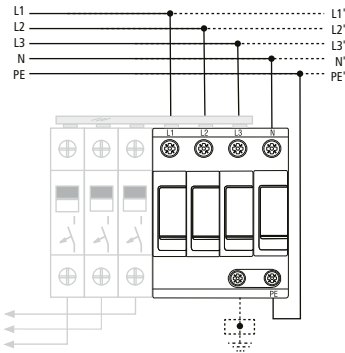
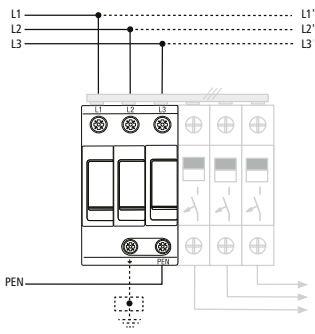
	DG M TNC ACI 275 FM		DG M TNS ACI 275 FM		DG M TT ACI 275 FM	
	L-PEN	L-N	N-PE	L-N	N-PE	
DG MOD ACI 275	DG MOD ACI 275	DG MOD A NPE	DG MOD ACI 275	DG MOD H A NPE		
U _N / Tol.: ±10%	230 / 400 V (50/60 Hz)					
U _c	275 V	255 V	275 V	255 V		
I _{SCCR}	25 kArms	---	25 kArms	---		
I _h	---	100 A _{Rms}	---	100 A _{Rms}		
θ _a	-40°C ... +80°C					
φ	5% ... 95%					
I _{PE}	< 5 μA					
IP *)	20					
L x W x H	90 mm x 54 mm x 77 mm		90 mm x 72 mm x 77 mm			

min. □ L, N, PE(N), ↓	12 mm	12 mm	12 mm
max. □ L, N, PE(N), ↓	25 mm ²	1,5 mm ²	35 mm
□	16 mm ² Cu ≥15,5 mm		

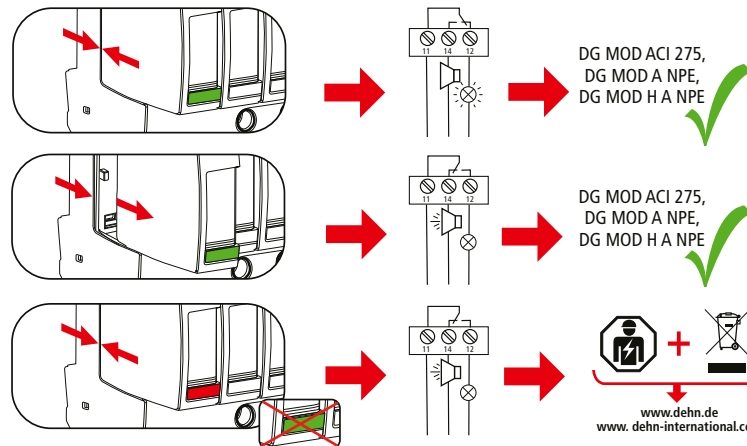
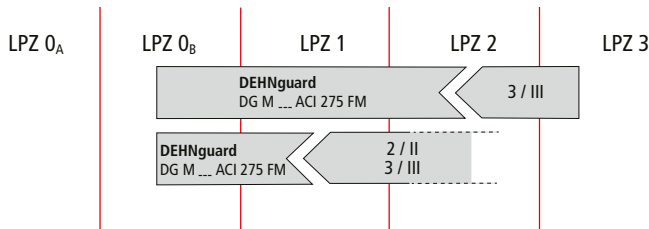
TN-C DG M TNC ACI 275 FM

TN (-C) -S DG M TNS ACI 275 FM

TT DG M TT ACI 275 FM



S ₁ / mm ²	max. I _k	S ₂ / mm ²	S ₃ / mm ²	
X - X ³⁾	≤ 25 kA	≥ 6 mm ² 2)	≥ 6 mm ²	X
≤ 25 mm ² ≤ 35 mm ²	≤ 25 kA	= S ₁	= S ₁ min. 6 mm ²	X



DEHNguard modular DG M TNC ACI 275 FM, DG M TNS ACI 275 FM, DG M TT ACI 275 FM

	U _N / I _N	AC: 250 V / 0,5 A
		DC: 250 V / 0,1 A 125 V / 0,2 A 75 V / 0,5 A
	max. 1,5 mm ²	

