

Han 100A axial module, female 6-10 mm²

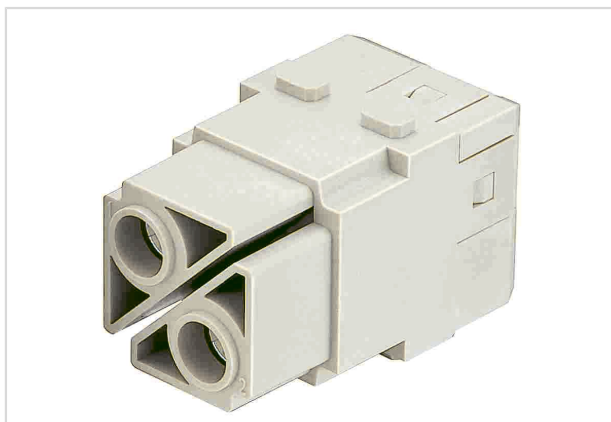


Image is for illustration purposes only. Please refer to product description.

Part number	09 14 002 2755
Specification	Han 100A axial module, female 6-10 mm ²
HARTING eCatalogue	https://b2b.harting.com/09140022755

Identification

Category	Modules
Series	Han-Modular®
Type of module	Han® 100 A module
Size of the module	Double module

Version

Termination method	Axial screw termination
Gender	Female
Number of contacts	2

Technical characteristics

Conductor cross-section	6 ... 10 mm ²
Rated current	100 A
Rated voltage	1,000 V
Rated impulse voltage	8 kV
Pollution degree	3
Rated voltage acc. to UL	600 V
Insulation resistance	>10 ¹⁰ Ω
Contact resistance	≤0.3 mΩ
Stripping length	12 ... 14 mm
Limiting temperature	-40 ... +125 °C
Mating cycles	≥500



Pushing Performance
 Since 1945

Material properties

Material (insert)	Polycarbonate (PC)
Colour (insert)	RAL 7032 (pebble grey)
Material (contacts)	Copper alloy
Surface (contacts)	Silver plated
Material flammability class acc. to UL 94	V-0
RoHS	compliant with exemption
RoHS exemptions	6(c): Copper alloy containing up to 4 % lead by weight
ELV status	compliant with exemption
China RoHS	50
REACH Annex XVII substances	Not contained
REACH ANNEX XIV substances	Not contained
REACH SVHC substances	Yes
REACH SVHC substances	Lead
ECHA SCIP number	5dbb3851-b94e-4e88-97a1-571845975242
California Proposition 65 substances	Yes
California Proposition 65 substances	Lead Nickel
Fire protection on railway vehicles	EN 45545-2 (2020-08)
Requirement set with Hazard Levels	R22 (HL 1-3) R23 (HL 1-3)

Specifications and approvals

Specifications	IEC 60664-1 IEC 61984
Approvals	DNV GL
UL / CSA	UL 1977 ECBT2.E235076 CSA-C22.2 No. 182.3 ECBT8.E235076 UL 2237 PVVA2.E318390 CSA-C22.2 No. 182.3 PVVA8.E318390

Commercial data

Packaging size	1
Net weight	84 g
Country of origin	Germany
European customs tariff number	85366990
GTIN	5713140184565



Pushing Performance
Since 1945

Commercial data

eCl@ss

27440217 Module for industrial connectors (power/signals)
