

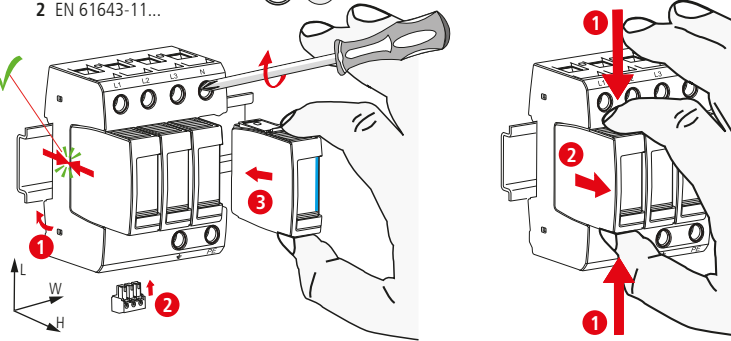
DEHNguard modular DG M TT 385/305 FM

- DE Einbauanleitung
- GB Installation instructions
- IT Istruzioni di montaggio
- FR Instructions de montage
- NL Montagehandleiding
- ES Instrucciones de montaje
- PT Instruções de montagem
- DK Monteringsvejledning
- SE Monteringsanvisning
- FI Asennusohje
- GR Οδηγίες συναρμολόγησης
- PL Instrukcja montażu
- CZ Montážní návod
- TR Kurulum Talimatları
- RU Инструкция по монтажу
- CN 安装说明
- HU Szerelési útmutató
- JP 設置説明書



II IEC 61643-11...  
2 EN 61643-11...

PZ 2 4 Nm

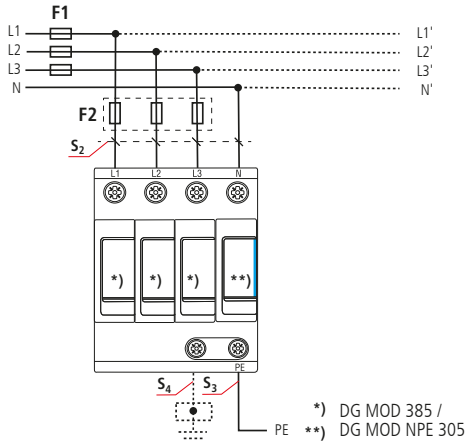


	DG M TT 385/305 (FM)	
	L-N DG MOD 385	N-PE DG MOD NPE 305
$U_N$ / Tol.: ±10%	230 V / 400V	
$U_c$	385 V~	305 V
$f_N$	50 / 60 Hz	
max.	125 A gG	---
$I_{SCCR}$	25 kA <sub>rms</sub>	---
$I_{li}$	---	100 A <sub>rms</sub>
$I_{max}$	40 kA	
$\theta$	-40°C ... + 80°C	
$\varphi$	5% ... 95%	
$I_{pe}$	< 5 $\mu$ A	
IP 1)	20	
L x W x H	90 mm x 72 mm x 73 mm	

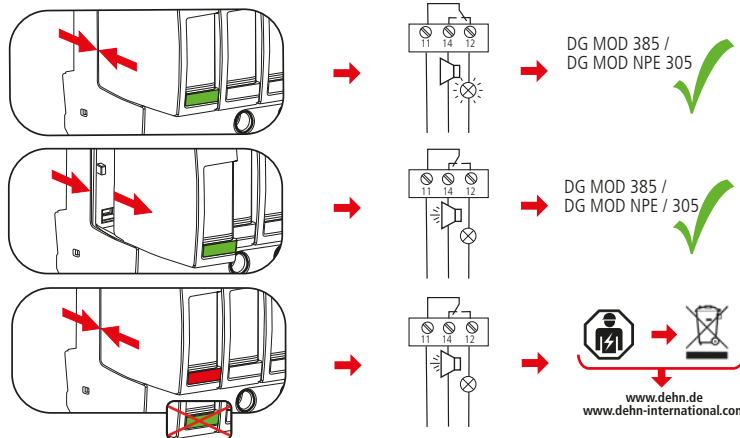
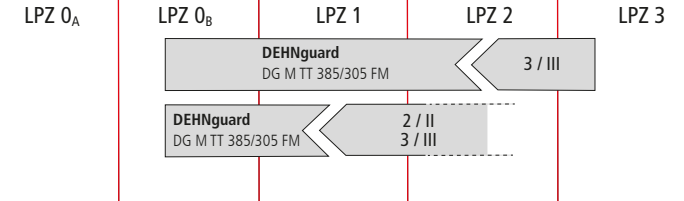
  

min. $\square$ L, N, PE, $\perp$		1.5 mm <sup>2</sup>	
max. $\square$ L, N, PE, $\perp$	25 mm <sup>2</sup>		35 mm <sup>2</sup>
$\square$	16 mm <sup>2</sup> Cu		$\geq 15.5$ mm

DG M TT 385/305 FM



DEHNguard DG M TT 385/305 FM		DEHNguard DG M TT 385/305 FM				
F1 A gG	F2 A gG	F1 A gG	S <sub>2</sub> / mm <sup>2</sup>	S <sub>3</sub> / mm <sup>2</sup>	S <sub>4</sub> / mm <sup>2</sup>	F2 A gG
F1 ≤ 125 A gG		25	4	6	6	---
		35	4	6	6	---
		40	4	6	6	---
		50	6	6	6	---
F1 > 125 A gG		63	10	10	10	---
		80	10	10	10	---
		100	16	16	16	---
		125	16	16	16	---
F2 ≤ 125 A gG		> 125	16	16	16	125



DEHNguard DG M TT 385/305 FM	
	$U_N$ / $I_N$ AC: 250 V / 0.5 A DC: 250 V / 0.1 A 125 V / 0.2 A 75 V / 0.5 A
	max. 1.5 mm <sup>2</sup>

