

D-SUB 37F-IDC

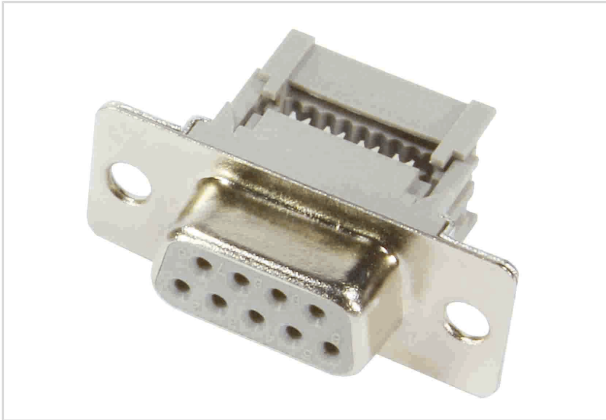


Image is for illustration purposes only. Please refer to product description.

Part number	09 66 418 6500
Specification	D-SUB 37F-IDC
HARTING eCatalogue	https://b2b.harting.com/09664186500

Identification

Category	Connectors
Series	D-Sub
Identification	Standard
Element	Connector
Description of the contact	Stamped Straight

Version

Termination method	IDC insulation displacement termination
Gender	Female
Size	D-Sub 4
Connection type	PCB to cable Cable to cable
Number of contacts	37
Locking type	Fixing flange with feed through hole \varnothing 3.1 mm

Technical characteristics

Conductor cross-section	0.09 ... 0.13 mm ²
Conductor cross-section	AWG 28 ... AWG 26
Rated current	2 A
Clearance distance	≥ 0.7 mm
Creepage distance	≥ 0.7 mm
Insulation resistance	$> 10^{10}$ Ω
Contact resistance	≤ 10 m Ω

Technical characteristics

Limiting temperature	-55 ... +125 °C
Insertion force	≤123 N
Withdrawal force	≥11 N ≤82 N
Performance level	2 acc. to CECC 75301-802
Mating cycles	≥250
Test voltage $U_{r.m.s.}$	1 kV
Hot plugging	No

Material properties

Material (insert)	Thermoplastic resin, glass-fibre filled (PBTP) Shell: Plated steel
Colour (insert)	Black
Material (contacts)	Copper alloy
Surface (contacts)	Noble metal over Ni
Material flammability class acc. to UL 94	V-0
RoHS	compliant
ELV status	compliant
China RoHS	e
REACH Annex XVII substances	Not contained
REACH ANNEX XIV substances	Not contained
REACH SVHC substances	Not contained
California Proposition 65 substances	Yes
California Proposition 65 substances	Antimony trioxide Lead Nickel

Specifications and approvals

Specifications	DIN 41652
UL / CSA	UL 1977 ECBT2.E102079

Commercial data

Packaging size	50
Net weight	20.4 g
Country of origin	China



Pushing Performance
Since 1945

Commercial data

European customs tariff number	85366990
GTIN	5713140085046
eCl@ss	27440214 D-Sub coupler
