

Flush-mounting caravan appliance inlet - housing dimensions 163x102 white pivotable plug



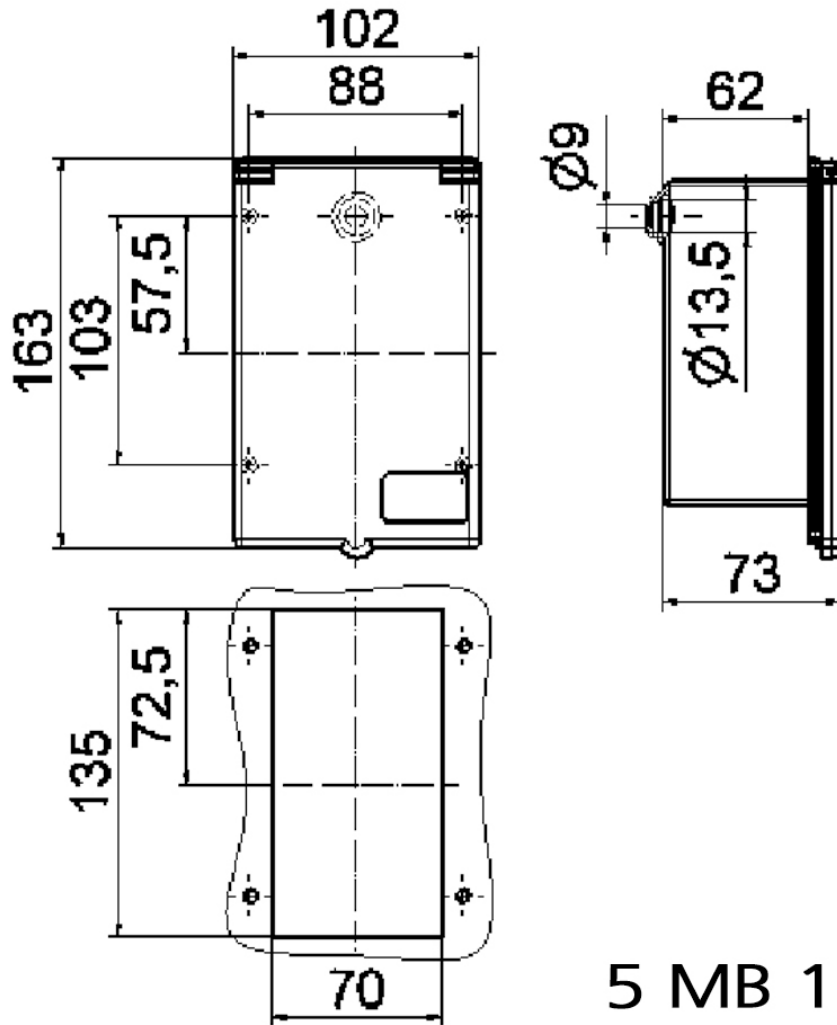
Product description	
BALS-Prd.-Nr	254
EAN	4024941002547
Product category	Flush-mounting caravan appliance inlet
Current	16A
Number of poles	3p
Poles	2P+PE
Position of earth contact	6 h
Voltage	200 up to 250V

Product description	
Frequency	50 and 60Hz
Protection degree	IP44
Colour code	white
Colour of appliance	Housing bottom blue RAL 5015, Collar blue RAL 5015, Housing cover blue RAL 5015
Connection design	with screw terminal
Maximum conductor size	2,5 qmm
Cable entry	up to diameter 13,5
Height	170mm
Width	102mm
Depth	75mm
Dimension of enclosure	163x102 mm (HxW)
Material of enclosure	ABS
Contact	The contact carrier is made of polyamide, The contacts are brass

Additional technical properties	
	Fixing centers 103x88 built-in opening 135x70, The cable entry is one rear sided open
	Housing with rubber gasket and frame for intermediate fixing, Pivotal plug

Logistics data	
Weight/pcs	0.332 kg / Piece

Logistics data	
Packaging	Bag
Content amount	1 ST
EAN	4024941002547
Length	75 mm
Width	102 mm
Height	170 mm
Weight	0.333 kg
Volume	1,300.5 ccm
Packaging	Carton
Content amount	10 ST
EAN	4024941965545
Length	330 mm
Width	216 mm
Height	260 mm
Weight	3.546 kg
Volume	17,062.5 ccm

**5 MB 16**