

## DSUB SV FE SSDP ANG73-254 09P PL2 HOLE

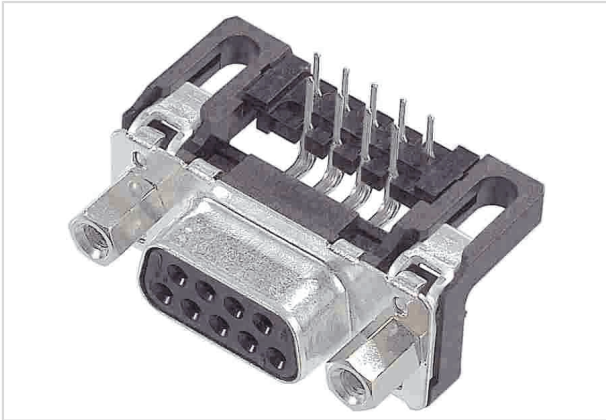


Image is for illustration purposes only. Please refer to product description.

Part number	09 66 112 6600
Specification	DSUB SV FE SSDP ANG73-254 09P PL2 HOLE
HARTING eCatalogue	<a href="https://b2b.harting.com/09661126600">https://b2b.harting.com/09661126600</a>

### Identification

Category	Connectors
Series	D-Sub
Identification	Standard
Element	Connector
Description of the contact	Stamped Angled

### Version

Termination method	Wave soldering termination
Gender	Female
Size	D-Sub 1
Connection type	Motherboard to daughtercard
Number of contacts	9
Termination length	2.9 mm
Locking type	Fixing flange with feed through hole $\varnothing$ 3.1 mm

### Technical characteristics

Distance between rows	2.54 mm
Contact spacing (termination side)	2.74 mm
Rated current	6.5 A
Clearance distance	$\geq 1$ mm
Creepage distance	$\geq 1$ mm
Insulation resistance	$>10^{10}$ $\Omega$



Pushing Performance  
Since 1945

## Technical characteristics

Contact resistance	≤10 mΩ
Limiting temperature	-55 ... +125 °C
Insertion force	≤30 N
Withdrawal force	≥3.3 N ≤20 N
Performance level	2 acc. to CECC 75301-802
Mating cycles	≥250
Test voltage $U_{r.m.s.}$	1 kV
Isolation group	IIIa (175 ≤ CTI < 400)
PCB thickness	≥1.6 mm
Installation height	7.3 mm
Hot plugging	No

## Material properties

Material (insert)	Thermoplastic resin, glass-fibre filled (PBTP) Shell: Plated steel
Colour (insert)	Black
Material (contacts)	Copper alloy
Surface (contacts)	Noble metal over Ni
Material flammability class acc. to UL 94	V-0
RoHS	compliant
ELV status	compliant
China RoHS	e
REACH Annex XVII substances	Not contained
REACH ANNEX XIV substances	Not contained
REACH SVHC substances	Not contained
California Proposition 65 substances	Yes
California Proposition 65 substances	Antimony trioxide Nickel

## Specifications and approvals

Specifications	DIN 41652
UL / CSA	UL 1977 ECBT2.E102079



**Pushing Performance**  
Since 1945

## Commercial data

Packaging size	100
Net weight	8.02 g
Country of origin	Romania
European customs tariff number	85366990
GTIN	5713140221031
eCl@ss	27440214 D-Sub coupler