

# TECHNICAL DATA SHEET

21/06/2018

DOC 144468

**DESIGNATION** SITUO VARIATION SOLIRIS RTS

**REFERENCES** 1800503 - SITUO VAR SOLIRIS RTS PURE II

**RANGE** SITUO RTS REMOTE CONTROL

## FUNCTIONS

**Situo 1 Variation SOLIRIS RTS are designed to manage tilting and diming RTS applications.**

Both remotes are also compatible with all RTS applications.

- A **scroll wheel** allows an easier control of **tilting** and **dimming** applications.
- **My** button allows to defined a **favorite position** of the application.
- **Up/Turn on/Open** function on “Up” button
- **Stop** function on “Stop/My” button
- **Down/Turn off/Close** function on “Down” button
- A select button enable to **select a channel** (on the Situo 5 Variation RTS only)

At each pressing of a button or tilting of scroll wheel, the transmitter emits radio orders and Led lights on during the time the button is pressed (to confirmed order emission)

The programming button located at the back of the transmitter allows to memorize the address of the transmitter in one or several receivers. It is the pairing process.

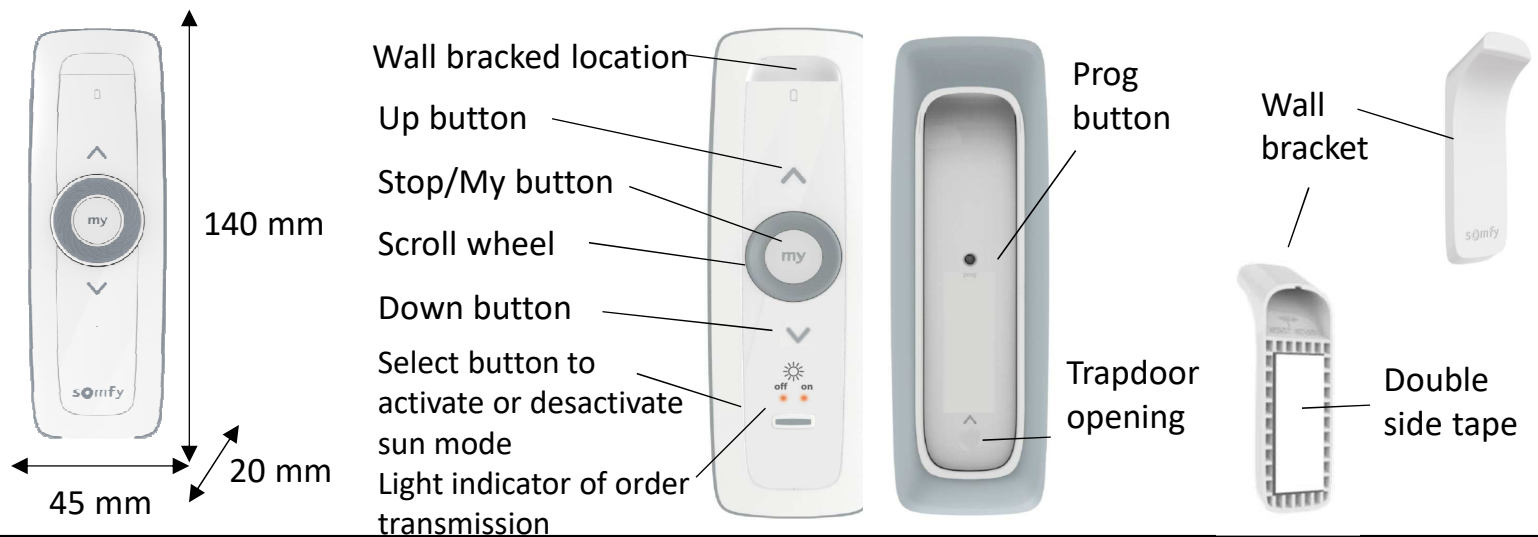


Situo 1 Variation  
soliris RTS Pure

## TECHNICAL SPECIFICATIONS

<b>BOX</b>	Material	ABS
	Colors	Grey and white (Pure)
	Size	140 x 45 x 20 mm
<b>WEIGHT</b>	Gramme	60g (including battery)
<b>BATTERY</b>	Voltage	3V
	Type	CR2430
	Lifetime (at ambient temperature)	5 years (max 10 orders per day)
<b>RADIO FREQUENCY</b>	MHz	433.42MHz
<b>RADIO POWER</b>	dBm	-3 dBm to +1dBm PAR
<b>RADIO RANGE</b>	House	20 meters between 2 walls Use guaranteed in most of « House installation », depending of the environment.
<b>MODULATION TYPE</b>		AM - 100% OOK
<b>PROTOCOL</b>		RTS
<b>ANTENNA</b>		Integrated
<b>TEMPERATURE RANGE</b>	Storing Working	-20°C / +60°C 0°C / +48°C
<b>STANDARDS</b>	Electromagnetic compatibility	EN 301489-1 EN 301489-3
	Electrical safety	EN 62368-1
	Protection on the health	EN 62479
	Radio	EN 300220-1 EN 300220-2

## DESCRIPTION



## COMPATIBILITIES

See compatibility matrix

## USAGE

Press on **“Up”** button sends open / switch on / tilt to applications (Roller shutters, Screens, Awnings, Lights, EVBs ...)

Press on **“Down”** button sends close / switch off / tilt to applications (Roller shutters, Screens, Awnings, Lights, EVBs ...)

Short press on **“My”** sends **stop** if actuator is moving.

Short press on **“My”** sends actuator to **favourite predetermined position** order if actuator is already stopped.

**Scroll wheel** can turn clockwise and counterclockwise.

Turn clockwise increase light and heat intensity or increase light opening EVB, IVB, Pergola.  
Turn counterclockwise decrease light and heat intensity or decrease light opening EVB, IVB, Pergola.

Note that some specific ergonomics could be applied (*see actuators leaflets for further information*).

### **My setting**

Long press (5secs) on “My” saves “My” position inside the actuator.

If the actuator is already in “My” position, it will erase the “My” position. (depending on the actuators)

### **Prog (pairing process)**

Short press (0,5secs) on Prog to pair your product to a “waked up” actuator.

Long press (2secs) on Prog to wake up the actuator already paired.

### **Rolling code**

The first code is automatically set in factory.

At each control given by the transmitter, the code is automatically changed (rolling code, 16 million of possibilities).

Somfy Actuators settings and re-settings with multiple press of Up, My and Down buttons (see actuators leaflets).

Wall support information:

**WARNING:** the wall support is not compatible with SITUO RTS and wall support of SITUO RTS will not be compatible with SITUO VARIATION  
RTS