

Han 24EMC/B-HTE-M32 (HT)

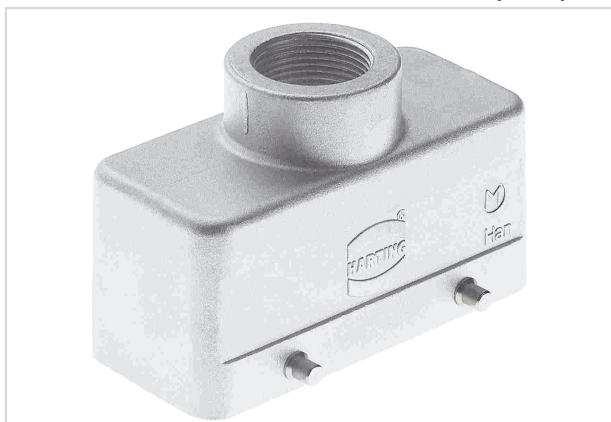


Image is for illustration purposes only. Please refer to product description.

Part number	19 62 824 1422
Specification	Han 24EMC/B-HTE-M32 (HT)
HARTING eCatalogue	https://b2b.harting.com/19628241422

Identification

Category	Hoods/Housings
Series of hoods/housings	Han [®] EMC/B Han [®] High Temp
Type of hood/housing	Hood
Type	Low construction

Version

Size	24 B
Version	Top entry
Cable entry	1x M32
Locking type	Double locking lever
Field of application	Hoods/Housings for higher EMC requirements

Technical characteristics

Limiting temperature	-40 ... +125 °C
	-40 ... +200 °C With Han [®] High Temp components
Degree of protection acc. to IEC 60529	IP65
	IP66
Type rating acc. to UL 50 / UL 50E	4
	12

Material properties

Material (hood/housing)	Aluminium die-cast
Surface (hood/housing)	Uncoated



Pushing Performance
Since 1945

Material properties

Colour (hood/housing)	Unpainted
RoHS	compliant
ELV status	compliant
China RoHS	e
REACH Annex XVII substances	Not contained
REACH ANNEX XIV substances	Not contained
REACH SVHC substances	Not contained
California Proposition 65 substances	Yes

Specifications and approvals

Approvals	DNV GL
UL / CSA	UL 1977 ECBT2.E235076 CSA-C22.2 No. 182.3 ECBT8.E235076
CE	Yes

Commercial data

Packaging size	1
Net weight	200 g
Country of origin	Germany
European customs tariff number	85389099
GTIN	5713140133150
eCl@ss	27440202 Shell for industrial connectors