

Wall mounting socket outlet - housing dimensions 87x64



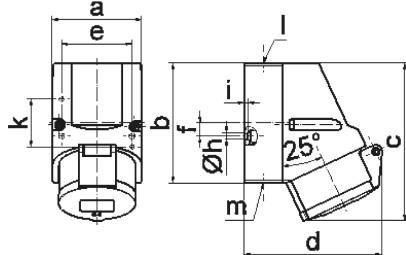
| Product description | |
|-------------------------------|---|
| BALS-Prd.-Nr | 11934 |
| EAN | 4024941119344 |
| product category (PG) | Wall mounting socket outlet Quick-Connect |
| current (A) | 16A |
| number of poles (P99) | 3p |
| number of poles (P) | 2P+PE |
| position of earth contact (H) | 2 h |
| voltage (V) | > 50V |
| frequency (HZ) | over 300 up to 500Hz |

| Product description | |
|-----------------------------|---|
| protection degree (SA) | IP44 |
| colour code 1 (KF1) | green RAL 6002 |
| Colour of appliance | Hinged lid green RAL 6002, Housing bottom grey RAL 7035, Housing top grey RAL 7035, Collar green RAL 6002 |
| connection design (AT) | screwless spring terminals as cage clamp with Kontex-contact |
| maximum conductor size (LQ) | 4,0 qmm |
| cable entry (KE) | top entry M20 |
| Height | 118mm |
| Width | 64mm |
| Depth | 104mm |
| dimension of enclosure (GG) | 87x64 mm (HxW) |
| material of enclosure (GM) | Polyamide |
| contact | The contact carrier is made of polyamide, The contacts are brass |

| Additional technical properties | |
|---------------------------------|---|
| | The cable entry is one at top open and one at bottom and one rear side closed |
| | Lower part of housing rotatable by 180° |

| Logistics data | |
|----------------|------------------|
| Weight/pcs | 0.181 kg / Piece |
| Packaging | Bag |

| Logistics data | |
|----------------|---------------|
| Content amount | 1 ST |
| EAN | 4024941119344 |
| Length | 104 mm |
| Width | 64 mm |
| Height | 118 mm |
| Weight | 0.182 kg |
| Volume | 785.408 ccm |
| Packaging | Carton |
| Content amount | 10 ST |
| EAN | 4024941820165 |
| Length | 258 mm |
| Width | 183 mm |
| Height | 212 mm |
| Weight | 1.962 kg |
| Volume | 8,750 ccm |



1 MB 7

| Ampere | 16 | 16 | 16 | | | |
|----------------------------|---------|---------|---------|--|--|--|
| Polzahl | 3 | 4 | 5 | | | |
| a | 64,0 | 75,0 | 75,0 | | | |
| b | 87,0 | 100,0 | 100,0 | | | |
| c | 117,0 | 129,0 | 131,0 | | | |
| d | 103,0 | 108,0 | 116,0 | | | |
| e | 51,0 | 59,0 | 59,0 | | | |
| f | - | 11,0 | 11,0 | | | |
| h ø | 4,1 | 5,1 | 5,1 | | | |
| i | 4,5 | 4,5 | 4,5 | | | |
| k | 40,0 | - | - | | | |
| l | M20 | M20 | M20 | | | |
| m | für M20 | für M20 | für M20 | | | |
| Leiter mm ² min | 1,5 | 1,5 | 1,5 | | | |
| Leiter mm ² max | 4 | 4 | 4 | | | |