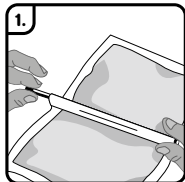
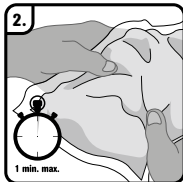


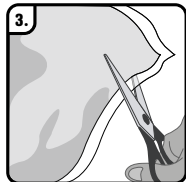
COMBI IP 68 SET



1. Remove the separators
Trennstäbe entfernen



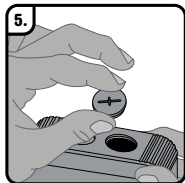
2. Mix the fluid
Vergussmasse mixen



3. Cut the bag
Beutel aufschneiden



4. Pour the fluid via the sprue
Fluid über den Trichter vergießen



5. Close the box with stop end
Mit Verschlusschraube verschließen