

Han 16HPR-HTE-SL-M40

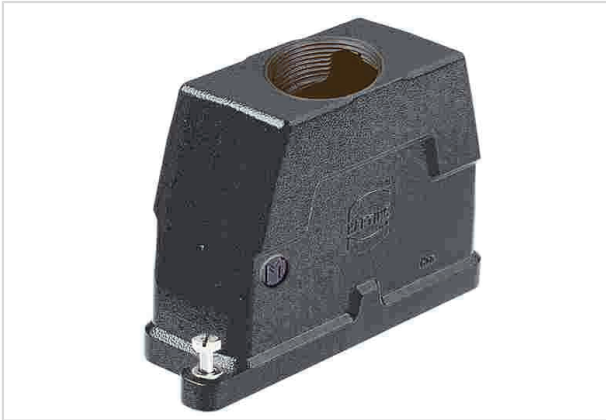


Image is for illustration purposes only. Please refer to product description.

Part number	19 40 016 0413
Specification	Han 16HPR-HTE-SL-M40
HARTING eCatalogue	https://b2b.harting.com/19400160413

Identification

Category	Hoods/Housings
Series of hoods/housings	Han [®] HPR
Type of hood/housing	Hood

Version

Size	16 B
Version	Top entry
Cable entry	1x M40
Locking type	Screw locking
Field of application	Hoods/housings for harsh outdoor environments

Technical characteristics

Tightening torque (screw locking)	4 Nm
Limiting temperature	-40 ... +125 °C
Degree of protection acc. to IEC 60529	IP65 IP68 IP69 / IPX9K acc. to ISO 20653
Type rating acc. to UL 50 / UL 50E	4 4X 12

Material properties

Material (hood/housing)	Aluminium die-cast Corrosion resistant
Surface (hood/housing)	Powder-coated



Pushing Performance
Since 1945

Material properties

Colour (hood/housing)	RAL 9005 (jet black)
Material (locking)	Stainless steel
RoHS	compliant
ELV status	compliant
China RoHS	e
REACH Annex XVII substances	Not contained
REACH ANNEX XIV substances	Not contained
REACH SVHC substances	Not contained
California Proposition 65 substances	Yes
California Proposition 65 substances	Nickel Naphthalene
Fire protection on railway vehicles	EN 45545-2 (2020-08)
Requirement set with Hazard Levels	R1 (HL 1-3) R7 (HL 1-3)

Specifications and approvals

Approvals	DNV GL
UL / CSA	UL 1977 ECBT2.E235076 CSA-C22.2 No. 182.3 ECBT8.E235076
CE	Yes

Commercial data

Packaging size	1
Net weight	529.67 g
Country of origin	Germany
European customs tariff number	85389099
GTIN	5713140129740
eCl@ss	27440202 Shell for industrial connectors