

## Flanged appliance inlet - flange 75x75, fixing centers 60x60

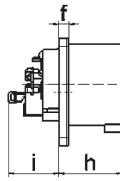
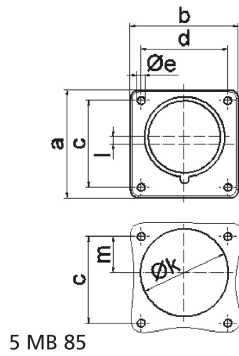


| Product description       |   |
|---------------------------|---|
| BALS-Prd.-Nr              | 28008   |
| EAN                       | 4024941280082                                   |
| Product category          | Flanged appliance inlet Quick-Connect, straight |
| Current                   | 16A   |
| Number of poles           | 5p  |
| Poles                     | 3p+N+PE   |
| Position of earth contact | 2 h   |
| Voltage                   | > 50V   |

| <b>Product description</b>     |  |
|--------------------------------|--|
| Frequency                      | over 300 up to 500Hz   |
| Protection degree              | IP44   |
| Colour code                    | green RAL 6002   |
| Colour of appliance            | Enclosure green RAL 6002   |
| Connection design              | screwless spring-clamp   |
| Maximum conductor size         | 2,5 qmm  |
| Cable entry                    | other  |
| Height                         | 75mm   |
| Width                          | 75mm   |
| Depth                          | 96mm   |
| Flange size vertical           | 75mm   |
| Flange size horizontal         | 75mm   |
| Drill hole distance vertical   | 60mm   |
| Drill hole distance horizontal | 60mm   |
| Material of enclosure          | Polyamide  |
| Contact                        | The contact carrier is made of polyamide, The contacts are brass |

| <b>Additional technical properties</b> |   |
|--|---|
|  | A retaining device to match the hinged cover of the connector must be provided to ensure the latching feature |
|  | Collar is brought out of center of the flange by 5 mm   |

| Logistics data |                  |
|----------------|------------------|
| Weight/pcs     | 0.122 kg / Piece |
| Packaging      | Bag              |
| Content amount | 1 ST             |
| EAN            | 4024941280082    |
| Length         | 96 mm            |
| Width          | 75 mm            |
| Height         | 75 mm            |
| Weight         | 0.123 kg         |
| Volume         | 540 ccm          |
| Packaging      | Carton           |
| Content amount | 10 ST            |
| EAN            | 4024941343749    |
| Length         | 275 mm           |
| Width          | 175 mm           |
| Height         | 137 mm           |
| Weight         | 1.345 kg         |
| Volume         | 5,737.5 ccm      |



| Ampere                     | 16   | 16   | 16   | 32   | 32   | 32   |
|----------------------------|------|------|------|------|------|------|
| Polzahl                    | 3    | 4    | 5    | 3    | 4    | 5    |
| a                          | 75,0 | 75,0 | 75,0 | 75,0 | 75,0 | 75,0 |
| b                          | 75,0 | 75,0 | 75,0 | 75,0 | 75,0 | 75,0 |
| c                          | 60,0 | 60,0 | 60,0 | 60,0 | 60,0 | 60,0 |
| d                          | 60,0 | 60,0 | 60,0 | 60,0 | 60,0 | 60,0 |
| e ø                        | 5,5  | 5,5  | 5,5  | 5,5  | 5,5  | 5,5  |
| f                          | 7,0  | 7,0  | 7,0  | 7,0  | 7,0  | 7,0  |
| h                          | 43,0 | 43,0 | 43,0 | 53,0 | 53,0 | 53,0 |
| i                          | 39,0 | 39,0 | 39,0 | 43,0 | 43,0 | 43,0 |
| k ø                        | 42,0 | 48,0 | 61,0 | 57,0 | 57,0 | 60,0 |
| l                          | -    | -    | 5,0  | 2,0  | 2,0  | -    |
| m                          | 30,0 | 30,0 | 25,0 | 28,0 | 28,0 | 30,0 |
| Leiter mm <sup>2</sup> min | 1    | 1    | 1    | 2,5  | 2,5  | 2,5  |
| Leiter mm <sup>2</sup> max | 2,5  | 2,5  | 2,5  | 6    | 6    | 6    |