

## **Instruction sheet NV-Einbauleuchte IP65 – PELWD**

### **General Details:**

- The assembly and the electrical connection should only be done by an authorised expert in compliance with standard practises and procedures.
- The luminaire is intended for interior installation or outdoor use (e.g. canopies) and shall not be covered (e.g. by heat-insulating covers or similar).
- The downlight is for use only with a guarded low voltage (12 Volt) according to current standards and guidelines.
- When installing the downlight into ships, boats and yachts, please observe the corresponding guidelines
- Disconnect from mains power during all works and maintenance.
- A safe use of the luminaire is only guaranteed when you follow the instructions in the installation sheet!
- The manufacturer will assume no liability if these instructions are not followed or the luminaire is used in applications other than the intended.

### **Installation:**

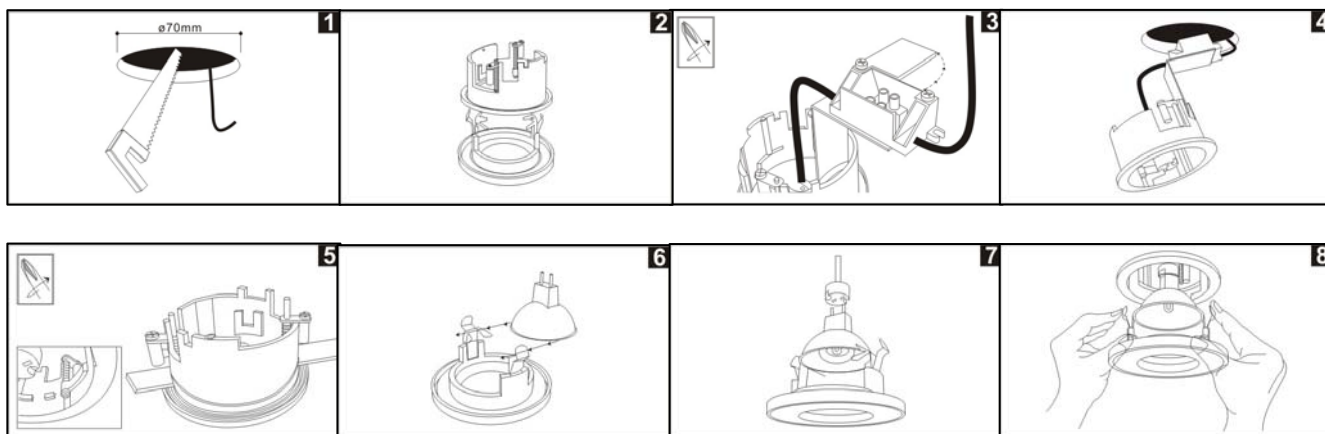
- Mount the transformer in its intended location and connect all wires (see the transformer instruction sheet for additional information).
- Remove the cover from the lighting fixture like the drawings and fix the housing in a 70mm cut hole.
- Fix the screw like the fig. 5 and bring the lamp (max.50W) in the intended location.
- Press the springs of the cover with the lamp (fig. 8) in the installation housing.
- When handling the lamps make sure that they are cooled off (min. 10 minutes)
- After the installation there has to be a minimum distance of 50 mm to neighbouring surfaces.

### **Lamp change:**

- Remove the cover from the lighting fixture for lamp change, take out the lamp from the socket and replace the old lamp
- Pay attention to the designation of the lamp power on the label.
- Check the safety glass and replace damaged safety glasses immediately.

### **Attention:**

During operation the lamp, objects next to the lamp and the body of the luminaire get hot. Risk of injury! Warning: Before replacing the lamp you have to switch off the luminaire in order to have it cooled down; this will take about 10 minutes.



**PROTEC.class®**

*einfach klasse!*