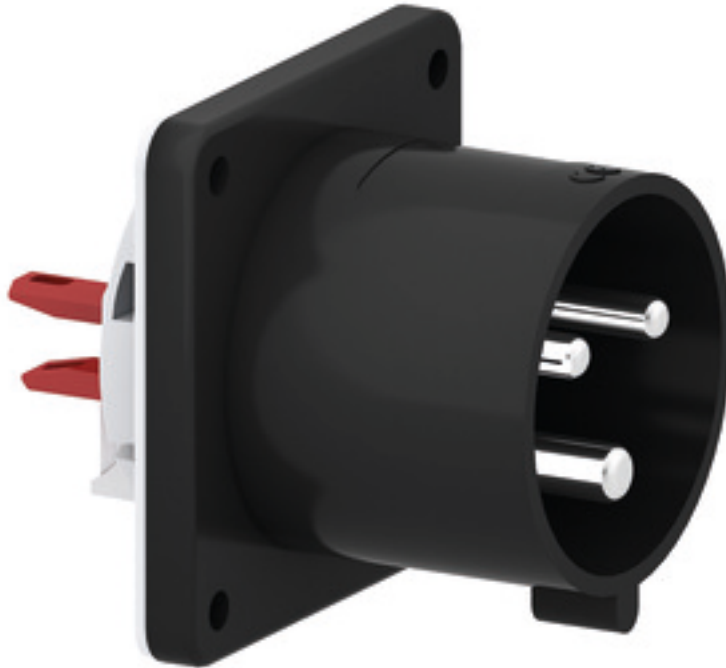


Flanged appliance inlet, black for event technology - for Event technology



| Product description | |
|---------------------------|---|
| BALS-Prd.-Nr | 28315 |
| EAN | 4024941938204 |
| Product category | Flanged appliance inlet Quick-Connect, straight |
| Current | 32A |
| Number of poles | 3p |
| Arrangement of phases | 2P+PE |
| Position of earth contact | 6 h |
| Voltage | 200 - 250V~ |

| Product description | |
|--------------------------------|--|
| Frequency | 50/60Hz |
| Protection degree | IP44 |
| Colour code | blue RAL 5015 |
| Colour of appliance | Enclosure black RAL 9005 |
| Connection design | screwless spring-clamp technology |
| Maximum conductor size | 6,0 qmm |
| Cable entry | other |
| Height | 75mm |
| Width | 75mm |
| Depth | 96mm |
| Flange size vertical in mm | 75mm |
| Flange size horizontal in mm | 75mm |
| Drill hole dist. vertical mm | 60mm |
| Drill hole dist. horizontal mm | 60mm |
| Material of enclosure | Polyamide |
| Contacts | The contact carrier is made of high temperature resistant material, the contacts are brass nickel plated |

| Additional technical properties | |
|---------------------------------|---|
| | Collar is brought out of center of the flange by 2 mm |

| Logistics data | |
|----------------|------------------|
| Weight/pcs | 0.142 kg / Piece |
| Packaging | Bag |
| Content amount | 1 ST |
| EAN | 4024941938204 |
| Length | 96 mm |
| Width | 75 mm |
| Height | 75 mm |
| Weight | 0.143 kg |
| Volume | 540 ccm |
| Packaging | Carton |
| Content amount | 10 ST |
| EAN | 4024941840507 |
| Length | 245 mm |
| Width | 177 mm |
| Height | 185 mm |
| Weight | 1.553 kg |
| Volume | 7,140 ccm |



| Ampere | 16 | 16 | 16 | 32 | 32 | 32 |
|----------------------------|------|------|------|------|------|------|
| Polzahl | 3 | 4 | 5 | 3 | 4 | 5 |
| a | 75,0 | 75,0 | 75,0 | 75,0 | 75,0 | 75,0 |
| b | 75,0 | 75,0 | 75,0 | 75,0 | 75,0 | 75,0 |
| c | 60,0 | 60,0 | 60,0 | 60,0 | 60,0 | 60,0 |
| d | 60,0 | 60,0 | 60,0 | 60,0 | 60,0 | 60,0 |
| e ø | 5,5 | 5,5 | 5,5 | 5,5 | 5,5 | 5,5 |
| f | 7,0 | 7,0 | 7,0 | 7,0 | 7,0 | 7,0 |
| h | 43,0 | 43,0 | 43,0 | 53,0 | 53,0 | 53,0 |
| i | 39,0 | 39,0 | 39,0 | 43,0 | 43,0 | 43,0 |
| k ø | 42,0 | 48,0 | 61,0 | 57,0 | 57,0 | 60,0 |
| l | - | - | 5,0 | 2,0 | 2,0 | - |
| m | 30,0 | 30,0 | 25,0 | 28,0 | 28,0 | 30,0 |
| Leiter mm ² min | 1 | 1 | 1 | 2,5 | 2,5 | 2,5 |
| Leiter mm ² max | 2,5 | 2,5 | 2,5 | 6 | 6 | 6 |