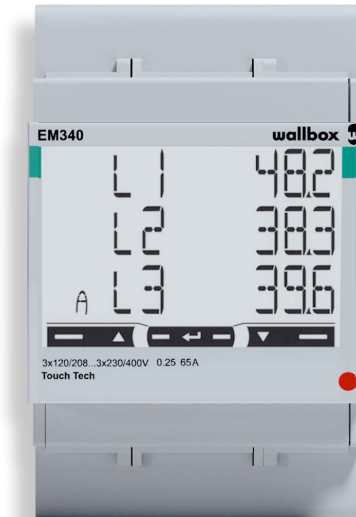


Energy Meter Pulsar

External meter for PV charging and dynamic load management

The Energy Meter Pulsar can be used to set up dynamic load management for the Wallbox ABL Pulsar, which ensures maximum charging power taking into account the upper current limit, while also protecting the house connection from overload. In addition, the external meter enables the efficient integration of a PV system and ensures an optimum ratio of solar power and grid power for the charging process via the solar charging mode. The Energy Meter Pulsar, designed as a top-hat rail module, is suitable for direct measurements for currents up to 65 A. The Energy Meter Pulsar is easily put into operation using the myWallbox app, and then allows visual monitoring of the charging current and the building load. If required, the Energy Meter Pulsar can be combined with the Wallbox ABL Pulsar Dienstwagen Bundle.



General information

Model	Energy Meter Pulsar
Manufacturer number	MTR-3P-65A
Product number	100000450
EAN number	8436575278018
Commodity code	90318080
Packaging dimensions (HxWxL)	65 × 110 × 166 mm
Weight (gross)	Approx. 0.5 kg
Packaging unit (PU)	1 unit
Items supplied	Energy Meter Pulsar, installation instructions, operating instructions, contact protection

Mains power supply

Connection cross section in line with EN 60204	Up to 16 mm ²
Tightening torque for screw terminals	2.8 Nm
Starting current	20 mA
Power supply	208 ~ 400 V AC, VLL ± 20 %
Frequency	50 / 60 Hz
Internal consumption P _{max}	≤ 1 W

Compatibility

Compatible model series	Wallbox ABL Pulsar
-------------------------	--------------------

Measuring circuit for measuring category III

Limit current I_N / phase	65 A
Rated voltage	400 V AC, VLL \pm 20 %
Frequency	50 / 60 Hz

Measured values and measurement accuracy

Voltage	\pm 0.5 %*
Current	\pm 0.5 %*
Active power	\pm 1.0 %*
Reactive power	\pm 2.0 %*
Power factor	\pm 1.0 %*
Active energy	Class 1
Reactive energy	Class 2

Operating conditions

Ambient temperature during transportation / storage	-30 to 80°C
Operating temperature	-25 to 55°C
Relative humidity	0 to 90 %
Class of protection	III
IP rating	IP51

Housing

Type	Top hat rail module
Fixing type	TH35 top hat rail
Housing material	Polyphenylene oxide, UL 94 V-1
Housing colour	White
Class of protection	IP51
Interfaces	1 \times RS485
Net dimensions (H \times W \times D)	91 \times 54 \times 63 mm
Weight (net)	0.2 kg

Subject to change: All performance characteristics, technical and other specifications are subject to change without prior notice.

Revision status ABL_100000450_DE_a, 03/24

ABL GmbH • Albert-Büttner-Straße 11 • D-91207 Lauf / Pegnitz • Tel. +49 (0) 9123 188-0 • info@abl.de • www.abl.de • www.ablmobility.de