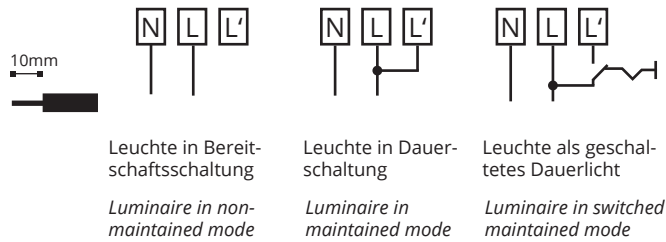


## Anschluss von Einzelbatterieleuchten Connection of Self-contained luminaires

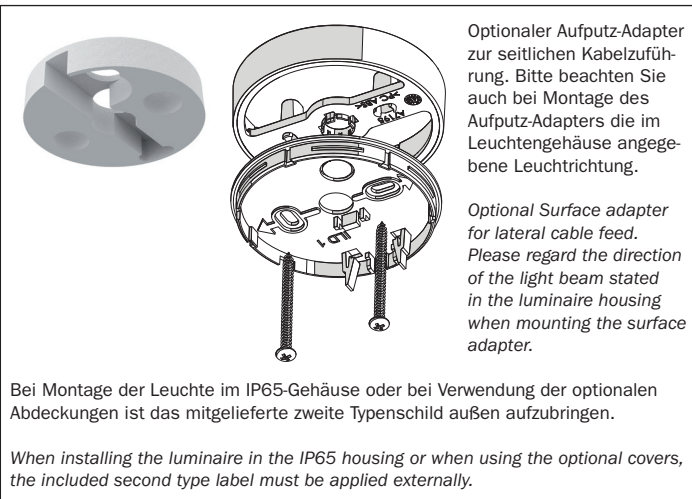


## Anschluss von Zentralbatterieleuchten Connection of central battery luminaires



Hinweise zur Konfiguration der Leuchtenelektronik entnehmen Sie bitte der separat beigefügten „Setup“-Anleitung.

*Information on the configuration of the luminaire electronics can be found in the separate „Setup“ manual.*



**Wichtig:** Bitte achten Sie darauf, den Akku nach Vorschrift zu wechseln, da ansonsten keine Funktion gewährleistet ist.



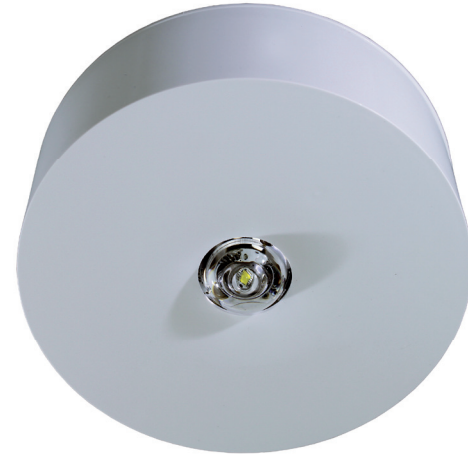
**Bei Batteriewechsel alten Akku nicht im Hausmüll entsorgen!**

### **Important:**

*Make sure the battery is replaced as stated in regulations, otherwise the function of the lamp is not guaranteed.*

**When replacing battery don't throw old accu into domestic waste!**

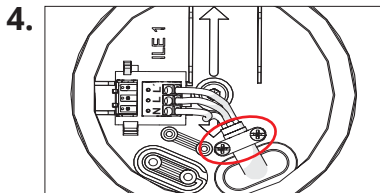
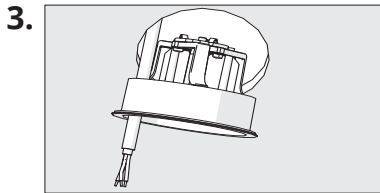
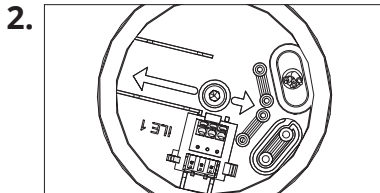
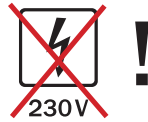
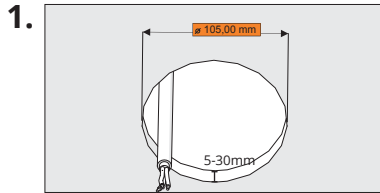
ANL-DE-EN-ILxL • 03/2023



## Montage / Mounting

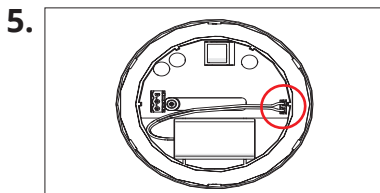


## Einbaumontage / Recessed mounted



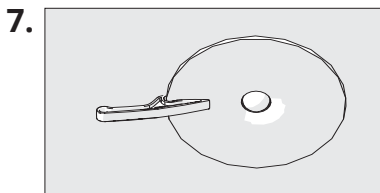
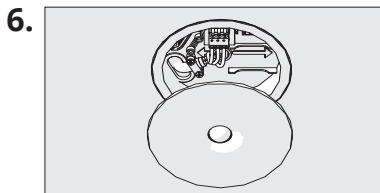
Montieren Sie mind. eine der beiden Zugentlastungen und führen den elektrischen Anschluss hindurch.

*Install at least one of the two strain reliefs and pull the electrical connection through.*



Akku anschließen (nur bei Einzelbatterieleuchten). Deckel auf das montierte Leuchtengehäuse drücken.

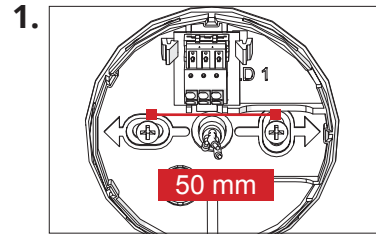
*Connect battery (for self-contained luminaires). Press the complete cover containing the electronics to the mounted luminaire body.*



Zum einfachen Öffnen der Leuchte ist ein optionaler Öffner erhältlich.

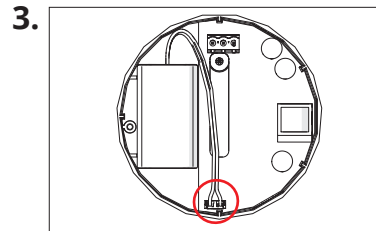
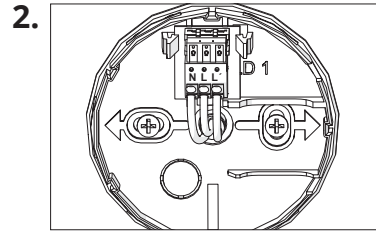
*For easy opening of the luminaire an optional opener is available.*

## Aufbaumontage / Surface mounted



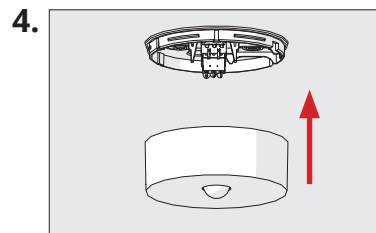
Während der Montage darf keine Spannung anliegen.

*Mains supply must be suspended during installation*

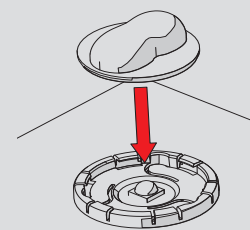


Akku anschließen (nur bei Einzelbatterieleuchten). Deckel auf das montierte Leuchtenunterteil drücken.

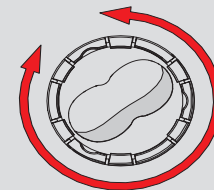
*Connect battery (for self-contained luminaires). Press the complete cover containing the electronics to the mounted luminaire body.*



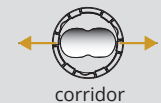
## Linse einsetzen / Insert lens



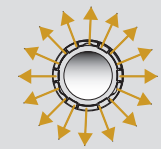
**snap into holder**



**rotate to adjust**



corridor



open area