

Han 24HP Direct cover device side

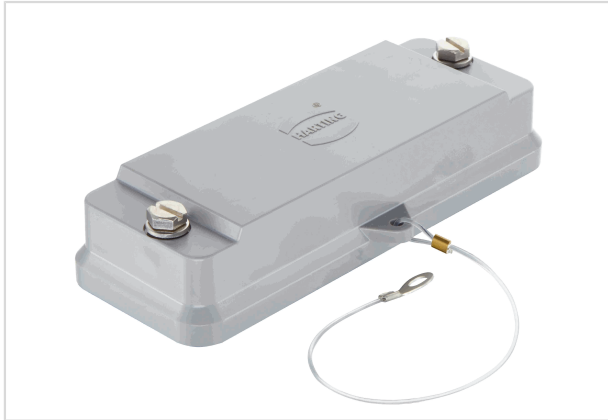


Image is for illustration purposes only. Please refer to product description.

Part number	09 39 024 5410
Specification	Han 24HP Direct cover device side
HARTING eCatalogue	https://b2b.harting.com/09390245410

Identification

Category	Accessories
Series of hoods/housings	Han [®] HP Direct B
Type of hood/housing	Protection cover
Description of hood/housing	for device side With fixing cord

Version

Size	24 B
Locking type	Screw locking

Technical characteristics

Tightening torque (screw locking)	4 Nm
Limiting temperature	-40 ... +120 °C
Degree of protection acc. to IEC 60529	IP66

Material properties

Material (hood/housing)	Polycarbonate (PC)
Colour (hood/housing)	RAL 7037 (dust grey)
Material (seal)	NBR
Material (locking)	Stainless steel
RoHS	compliant with exemption
RoHS exemptions	6(c): Copper alloy containing up to 4 % lead by weight
ELV status	compliant with exemption



Pushing Performance
Since 1945

Material properties

China RoHS	50
REACH Annex XVII substances	Not contained
REACH ANNEX XIV substances	Not contained
REACH SVHC substances	Yes
REACH SVHC substances	Potassium 1,1,2,2,3,3,4,4,4-nonafluorobutane-1-sulphonate Lead
California Proposition 65 substances	Yes
California Proposition 65 substances	Lead Nickel Naphthalene
Fire protection on railway vehicles	EN 45545-2 (2020-08)
Requirement set with Hazard Levels	R22 (HL 1-3) R23 (HL 1-3)

Specifications and approvals

Specifications	IEC 60664-1 IEC 61984
----------------	--------------------------

Commercial data

Packaging size	1
Net weight	1 g
Country of origin	China
European customs tariff number	85389099
GTIN	5713140192324
eCl@ss	27440208 Cap for industrial connectors