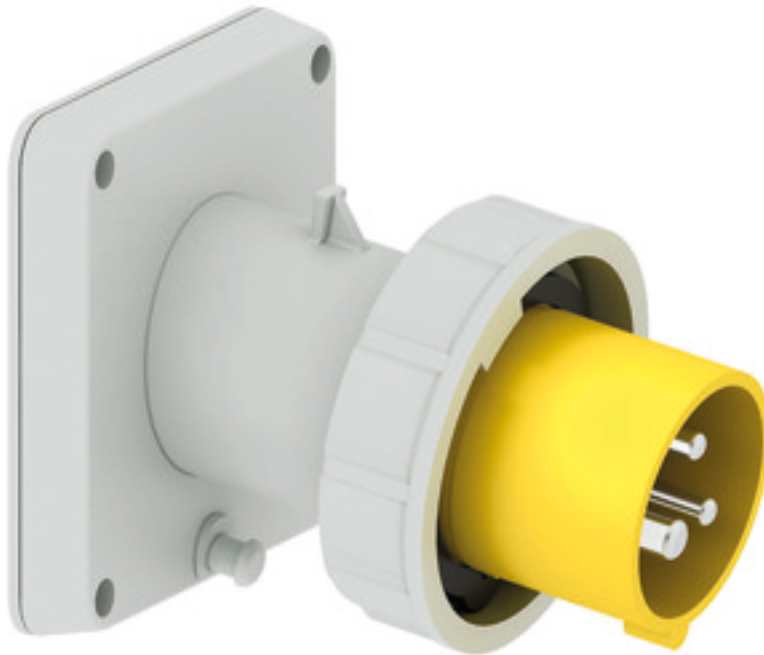


Panel mounting appliance inlet, angled - flange 85x85, fixing centers 70x70



| Product description | |
|---------------------------|---|
| BALS-Prd.-Nr | 27227 |
| EAN | 4024941272278 |
| Product category | TE panel mounting appliance inlet Quick-Connect, angled |
| Current | 16A |
| Number of poles | 3p |
| Arrangement of phases | 2P+PE |
| Position of earth contact | 4 h |
| Voltage | 100 - 130V~ |

| Product description | |
|--------------------------------|--|
| Frequency | 50/60Hz |
| Protection degree | IP67 |
| Colour code | yellow RAL 1012 |
| Colour of appliance | Collar yellow RAL 1012, Bayonet ring grey RAL 7035, Enclosure grey RAL 7035 |
| Connection design | screwless spring-clamp technology |
| Maximum conductor size | 2,5 qmm |
| Cable entry | other |
| Height | 95mm |
| Width | 85mm |
| Depth | 103mm |
| Flange size vertical in mm | 85mm |
| Flange size horizontal in mm | 85mm |
| Drill hole dist. vertical mm | 70mm |
| Drill hole dist. horizontal mm | 70mm |
| Material of enclosure | Polyamide |
| Contacts | The contact carrier is made of high temperature resistant material, the contacts are brass nickel plated |

| Additional technical properties | |
|---------------------------------|------------------------|
| | The inclination is 10° |

| Logistics data | |
|----------------|------------------|
| Weight/pcs | 0.175 kg / Piece |
| Packaging | Bag |
| Content amount | 1 ST |
| EAN | 4024941272278 |
| Length | 103 mm |
| Width | 85 mm |
| Height | 95 mm |
| Weight | 0.176 kg |
| Volume | 831.725 ccm |
| Packaging | Carton |
| Content amount | 10 ST |
| EAN | 4024941833790 |
| Length | 258 mm |
| Width | 183 mm |
| Height | 212 mm |
| Weight | 1.902 kg |
| Volume | 8,750 ccm |



5 MB 22

| Ampere | 16 | 16 | 16 | 32 | 32 | 32 |
|----------------------------|-------|-------|-------|-------|-------|-------|
| Polzahl | 3 | 4 | 5 | 3 | 4 | 5 |
| a | 85,0 | 85,0 | 85,0 | 85,0 | 85,0 | 85,0 |
| b | 85,0 | 85,0 | 85,0 | 85,0 | 85,0 | 85,0 |
| c | 70,0 | 70,0 | 70,0 | 70,0 | 70,0 | 70,0 |
| d | 70,0 | 70,0 | 70,0 | 70,0 | 70,0 | 70,0 |
| e Ø | 6,3 | 6,3 | 6,3 | 6,3 | 6,3 | 6,3 |
| f | 11,0 | 11,0 | 11,0 | 11,0 | 11,0 | 11,0 |
| h | 104,0 | 110,0 | 116,0 | 121,0 | 121,0 | 127,0 |
| i | 83,0 | 90,0 | 92,0 | 96,0 | 96,0 | 100,0 |
| k | 70,5 | 79,5 | 86,5 | 95,0 | 95,0 | 101,5 |
| Leiter mm ² min | 1 | 1 | 1 | 2,5 | 2,5 | 2,5 |
| Leiter mm ² max | 2,5 | 2,5 | 2,5 | 6 | 6 | 6 |
| | | | | | | |
| | | | | | | |