

DSUB SV MASSDPANG36-25415PPL3GCSLK4-40

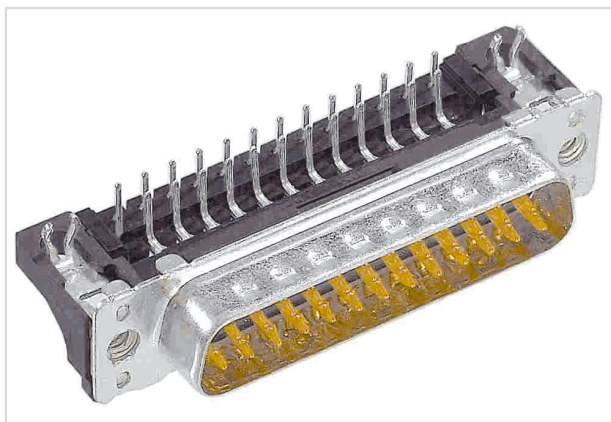


Image is for illustration purposes only. Please refer to product description.

| | |
|--------------------|---|
| Part number | 09 65 262 7817 |
| Specification | DSUB SV MASSDPANG36-25415PPL3GCSLK4-40 |
| HARTING eCatalogue | https://b2b.harting.com/09652627817 |

Identification

| | |
|----------------------------|-------------------|
| Category | Connectors |
| Series | D-Sub |
| Identification | Standard |
| Element | Connector |
| Specification | Low-profile |
| Description of the contact | Stamped Angled |

Version

| | |
|--------------------|---|
| Termination method | Wave soldering termination |
| Gender | Male |
| Size | D-Sub 2 |
| Connection type | Motherboard to daughtercard |
| Number of contacts | 15 |
| further contacts | With grounding pin |
| Termination length | 2.9 mm |
| PCB fixing | With board locks |
| Locking type | Fixing flange with fitted screw lock 4-40 UNC |

Technical characteristics

| | |
|------------------------------------|---------|
| Distance between rows | 2.54 mm |
| Contact spacing (termination side) | 2.74 mm |
| Rated current | 6.5 A |



Pushing Performance
 Since 1945

Technical characteristics

| | |
|----------------------------------|------------------------|
| Clearance distance | ≥1 mm |
| Creepage distance | ≥1 mm |
| Insulation resistance | >10 ¹⁰ Ω |
| Contact resistance | ≤10 mΩ |
| Tightening torque | ≤0.4 Nm Locking screw |
| Limiting temperature | -55 ... +125 °C |
| Insertion force | ≤50 N |
| Withdrawal force | ≥4.5 N ≤33 N |
| Performance level | 3 |
| Mating cycles | ≥50 |
| Test voltage U _{r.m.s.} | 1 kV |
| Isolation group | IIIa (175 ≤ CTI < 400) |
| PCB thickness | ≥1.6 mm |
| Installation height | 3.6 mm |
| Hot plugging | No |

Material properties

| | |
|---|---|
| Material (insert) | Thermoplastic resin, glass-fibre filled (PBTP) Shell: Plated steel |
| Colour (insert) | Black |
| Material (contacts) | Copper alloy |
| Surface (contacts) | Noble metal over Ni |
| Material flammability class acc. to UL 94 | V-0 |
| RoHS | compliant with exemption |
| RoHS exemptions | 6(c): Copper alloy containing up to 4 % lead by weight |
| ELV status | compliant with exemption |
| China RoHS | 50 |
| REACH Annex XVII substances | Not contained |
| REACH ANNEX XIV substances | Not contained |
| REACH SVHC substances | Yes |
| REACH SVHC substances | Lead |
| ECHA SCIP number | ecef7555-f643-4ceb-a337-fc54762297f1 |
| California Proposition 65 substances | Yes |



Pushing Performance
Since 1945

Material properties

| | |
|--------------------------------------|-------------------------------------|
| California Proposition 65 substances | Antimony trioxide Lead Nickel |
| Requirement set with Hazard Levels | R26 |

Specifications and approvals

| | |
|----------------|-----------------------|
| Specifications | DIN 41652 |
| UL / CSA | UL 1977 ECBT2.E102079 |

Commercial data

| | |
|--------------------------------|------------------------|
| Packaging size | 100 |
| Net weight | 10.85 g |
| Country of origin | Romania |
| European customs tariff number | 85366990 |
| GTIN | 5713140078055 |
| eCl@ss | 27440214 D-Sub coupler |